



Free Plan Set

Classic Pickup Camper

Rough and tumble model with the look of the real car



Lloydswoodtoyplans@gmail.com

Finished Model is approximately 12-1/4" long

FREE



Wood Model Plan Set
Easy to build & assemble



Warning Copyright

Thank you for purchasing my plan set
Please respect my work by not passing on the
drawing to third party

Files are security protect..Printing only.

Watermarks are in embedded in the PDF files for
security.

You can make as many toys as you like. The wood
toys in this plan set are royalty free. And i can not
have any responsibility for any injuries on making toy
model on this plan set.

Plan set index

3D Renders	3-19
Parts list and how-to	20-27
Cad drawing	28-57
Photo Card & Tags	58-63
Conversion chart	64

Lloyd's **Wood Toy Plan**
Classic Pickup Camper

Design by Lloyd Watson



3D Renders



3D Renders

Wood Toy Plan
Classic Pickup Camper
Design by Lloyd Watson



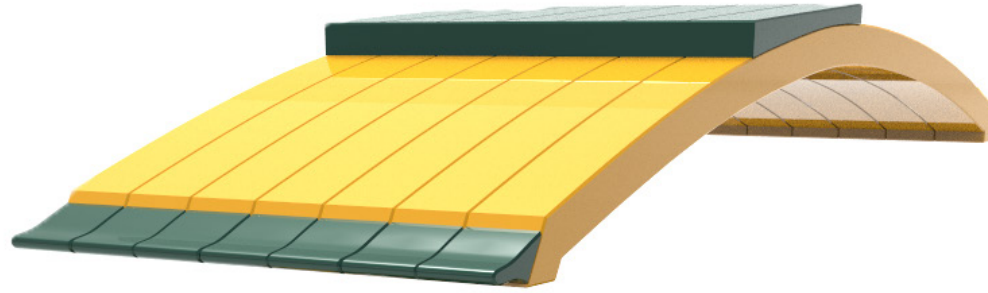
3D Renders



3D Renders

Wood Toy Plan
Classic Pickup Camper
Design by Lloyd Watson





3D Renders



3D Renders

Wood Toy Plan
Classic Pickup Camper
Design by Lloyd Watson



3D Renders



3D Renders

Wood Toy Plan
Classic Pickup Camper
Design by Lloyd Watson



3D Renders



3D Renders

Wood Toy Plan
Classic Pickup Camper
Design by Lloyd Watson

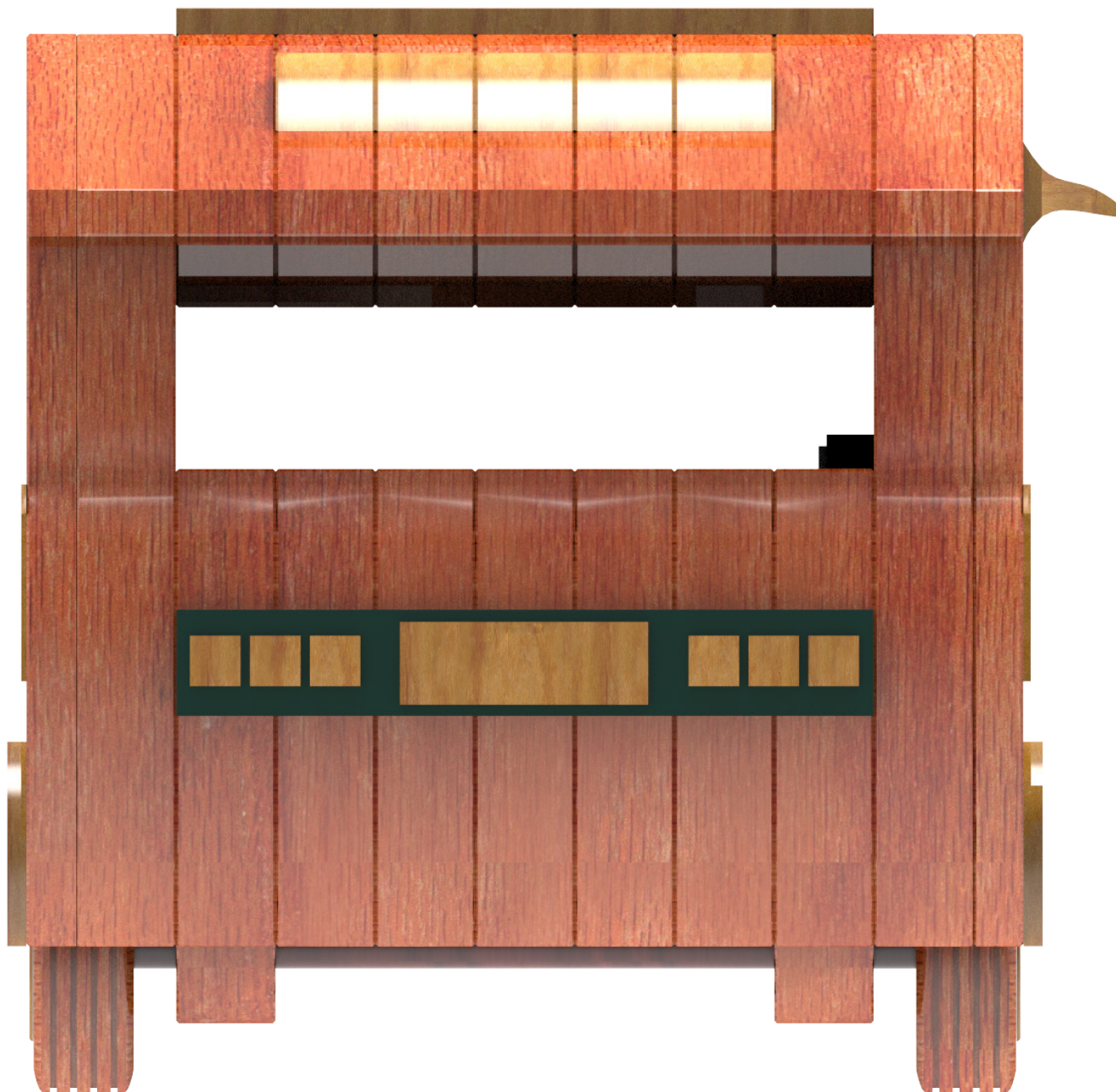


Orthographic view

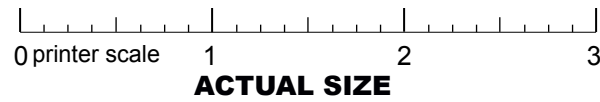


Orthographic view

Wood Toy Plan
Classic Pickup Camper
Design by Lloyd Watson



Wood Toy Plan
Classic Pickup Camper



Orthographic view

To view page 16-17 as a two-page spread in Adobe Reader:

1. Select View/Page Display/Two Page Scrolling
2. Select View/Page Display/Show Cover Page in Two Page View





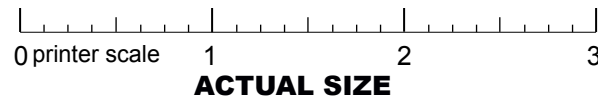
Orthographic view

To view page 16-17 as a two-page spread in Adobe Reader:

1. Select View/Page Display/Two Page Scrolling
2. Select View/Page Display/Show Cover Page in Two Page View



Wood Toy Plan
Classic Pickup Camper



Orthographic view

To view page 18-19 as a two-page spread in Adobe Reader:

1. Select View/Page Display/Two Page Scrolling
2. Select View/Page Display/Show Cover Page in Two Page View



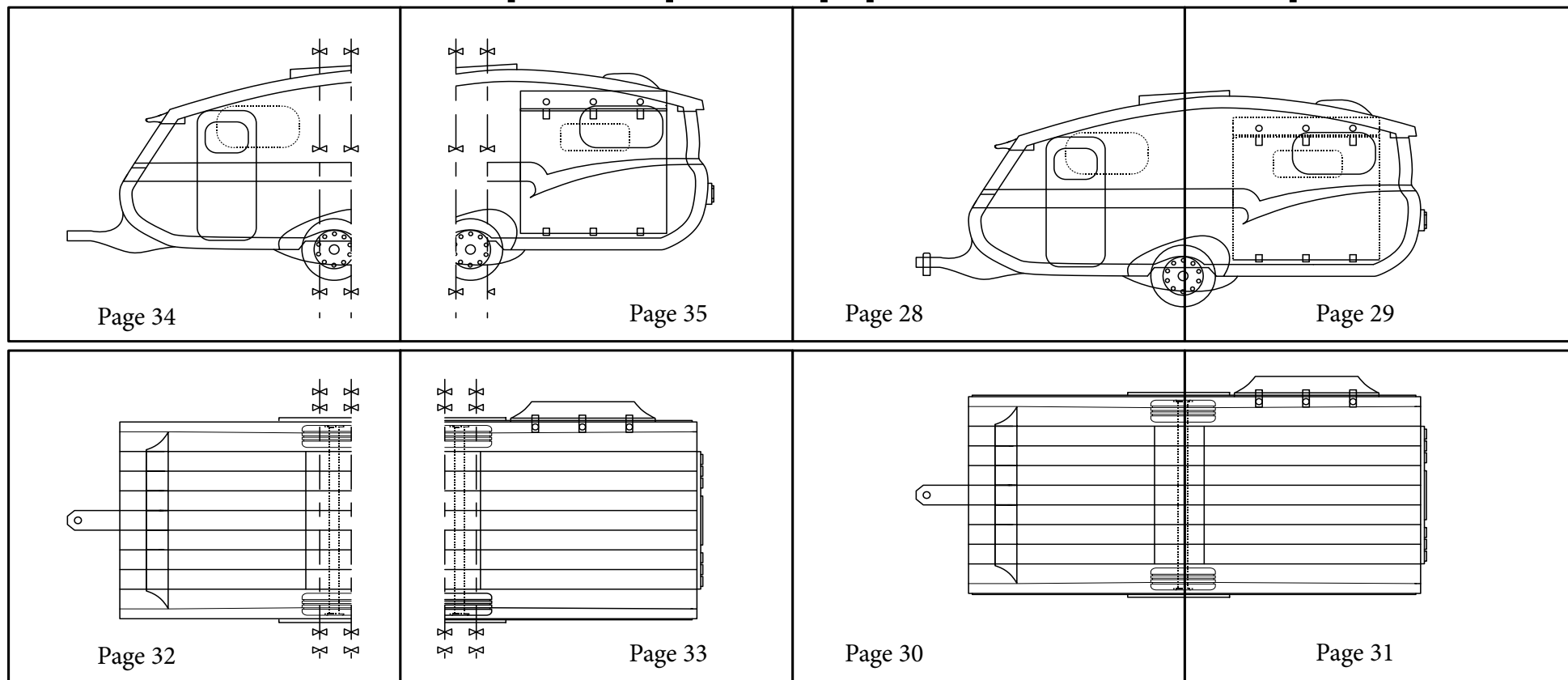
Orthographic view



To view page 18-19 as a two-page spread in Adobe Reader:

1. Select View/Page Display/Two Page Scrolling
2. Select View/Page Display/Show Cover Page in Two Page View

Classic Pickup Camper Top plan view & Side plan view

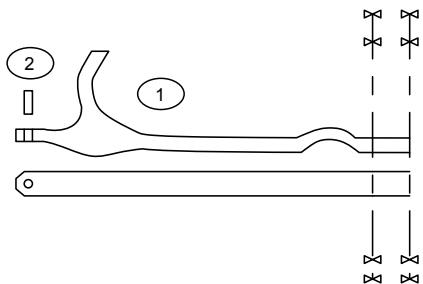


Classic Pickup Camper Parts List & Camper furniture Parts List

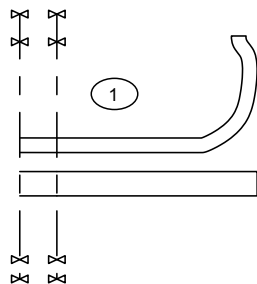
1.	1/2" x 2-3/4" x 12-1/2"	make 1	15.	1/8" x 1-1/8" x 10-3/4"	make 1	31.	1/4" x 1-1/2" x 5"	make 1
2.	1/4" diameter x 3/4"	make 1	16.	1/8" x 1-1/8" x 10-3/4"	make 1	32.	1/4" x 1-1/4" x 1-1/2"	make 1
3.	1/2" x 2-3/4" x 12-1/2"	make 4	17.	1/8" x 1-1/4" x 2-1/8"	make 2	33.	1/8" x 1-1/4" x 1-1/2"	make 2
4.	1/2" x 3" x 12-1/2"	make 2	18.	1/4" x 3/4" x 3-3/4"	make 1	34.	1/4" x 1-5/8" x 5-1/8"	make 1
5.	1/2" x 4-1/2" x 10-3/4"	make 2	19.	1/8" x 5/8" x 1-1/4"	make 1	35.	3/16" x 2" x 2"	make 1
5b.	3/8" x 3/8" x 4-1/2"	make 1	20.	1/8" x 1/4" x 1/4"	make 6	36.	1/2" diameter x 1"	make 1
5c.	3/8" x 3/8" x 4-1/2"	make 1	21.	1-1/2" diameter x 3/8"	make 2	37.	1/4" x 1-1/4" x 1-1/4"	make 1
6.	3/8" x 4-1/2" x 10-3/4"	make 1	22.	1-1/2" diameter x 1/8"	make 2	38.	3/16" x 5/8" x 1-1/8"	make 3
7.	3/8" x 1-3/4" x 3-1/2"	make 1	23.	3/4" diameter x 1/8"	make 2	39.	1/8" x 5/8" x 1-1/8"	make 6
8.	3/8" x 4-1/2" x 10-3/4"	make 1	24.	1/2" diameter x 1/16"	make 2	40.	1/4" x 1/4" x 1-3/4"	make 6
9.	3/8" x 3-3/4" x 3-1/2"	make 1	25.	1/4" diameter x 5"	make 1	41.	1/4" x 1/4" x 3/4"	make 6
10.	1/2" 1-3/4 x 10-1/2"	make 7	26.	1/4" x 1" x 5-3/4"	make 1	42.	3/4" x 3/4" x 1"	make 1
11.	1/8" diameter x 1/2"	make 6	27.	1/4" x 1" x 1-3/4"	make 2	42.	1/16 x 1-1/4" x 1-1/4"	make 1
12.	1/2" x 1/2" x 1-3/4"	make 5	28.	1/4" x 1-3/3" x 5-3/4"	make 1	43.	1/8" x 1-5/8" x 1-5/8"	make 1
13.	1/4" x 1/2" x 2-1/4"	make 7	29.	1/4" x 1-3/3" x 5-3/4"	make 1	44.	1/2" diameter x 1/8"	make 4
14.	1/2" x 3/4" x 3-3/4"	make 1	30.	1/4" x 5/8" x 1-1/4"	make 1	45.	1-1/2" x 1-1/2 x 1/16"	make 1

Classic Pickup Camper Plan Page list view

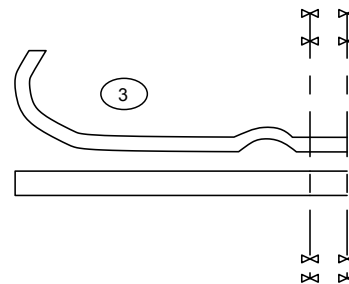
Page 36



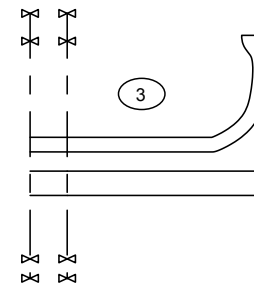
Page 37



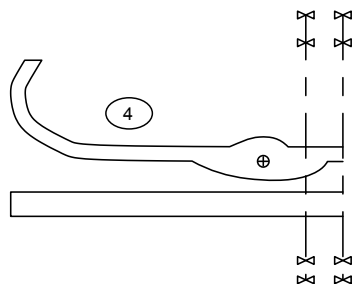
Page 38



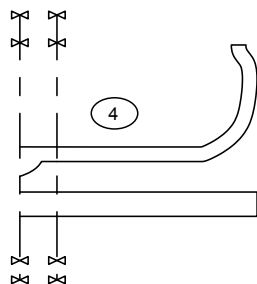
Page 39



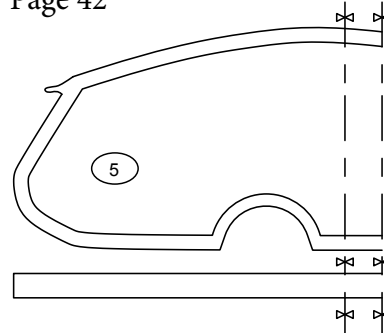
Page 40



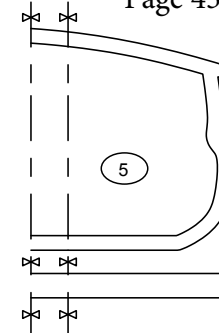
Page 41



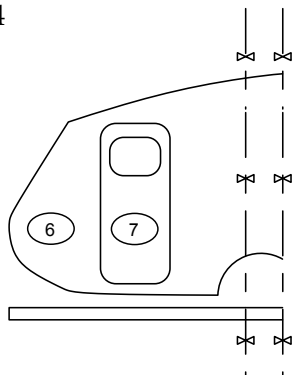
Page 42



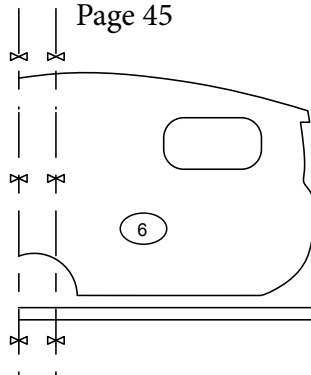
Page 43



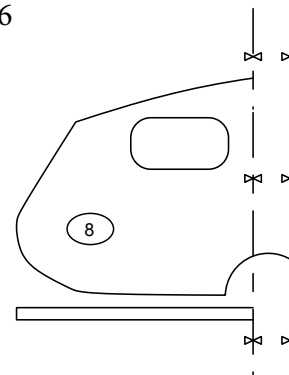
Page 44



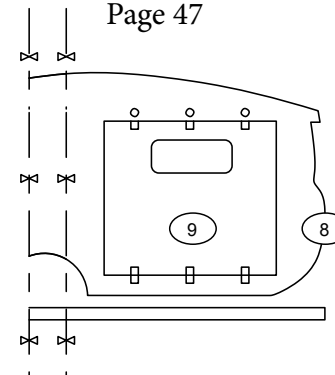
Page 45



Page 46

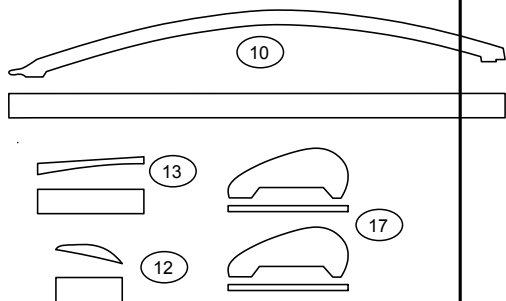


Page 47

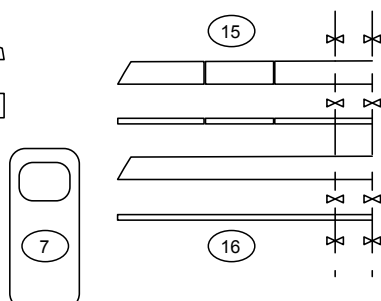


Wood Toy Plan Classic Pickup Camper

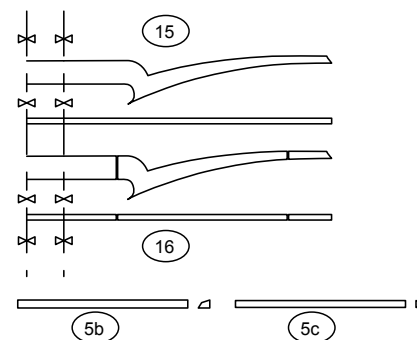
Page 48



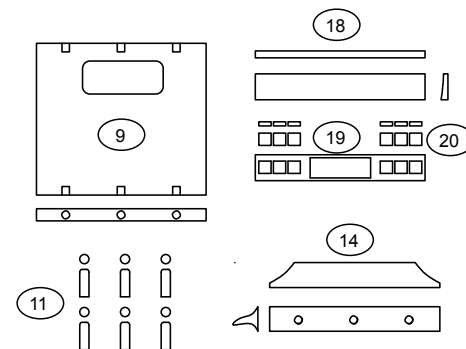
Page 49



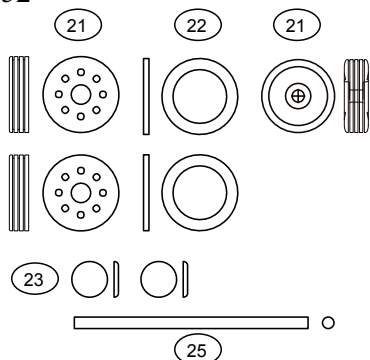
Page 50



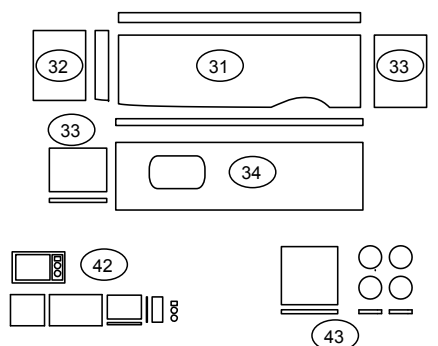
Page 51



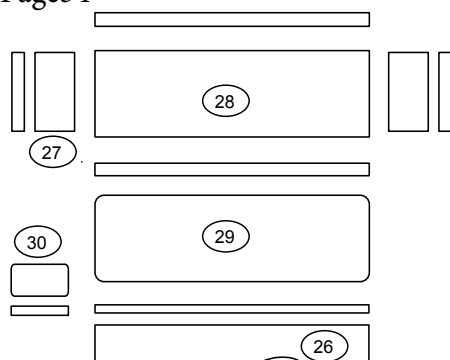
Page 52



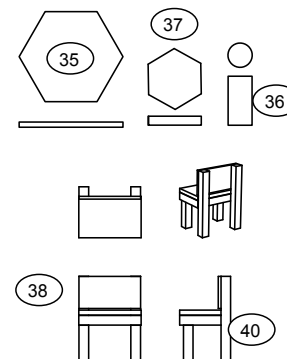
Page 53



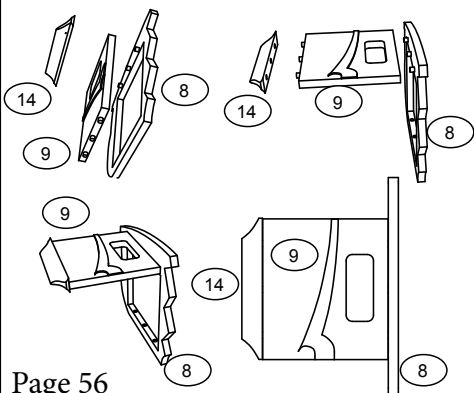
Page 54



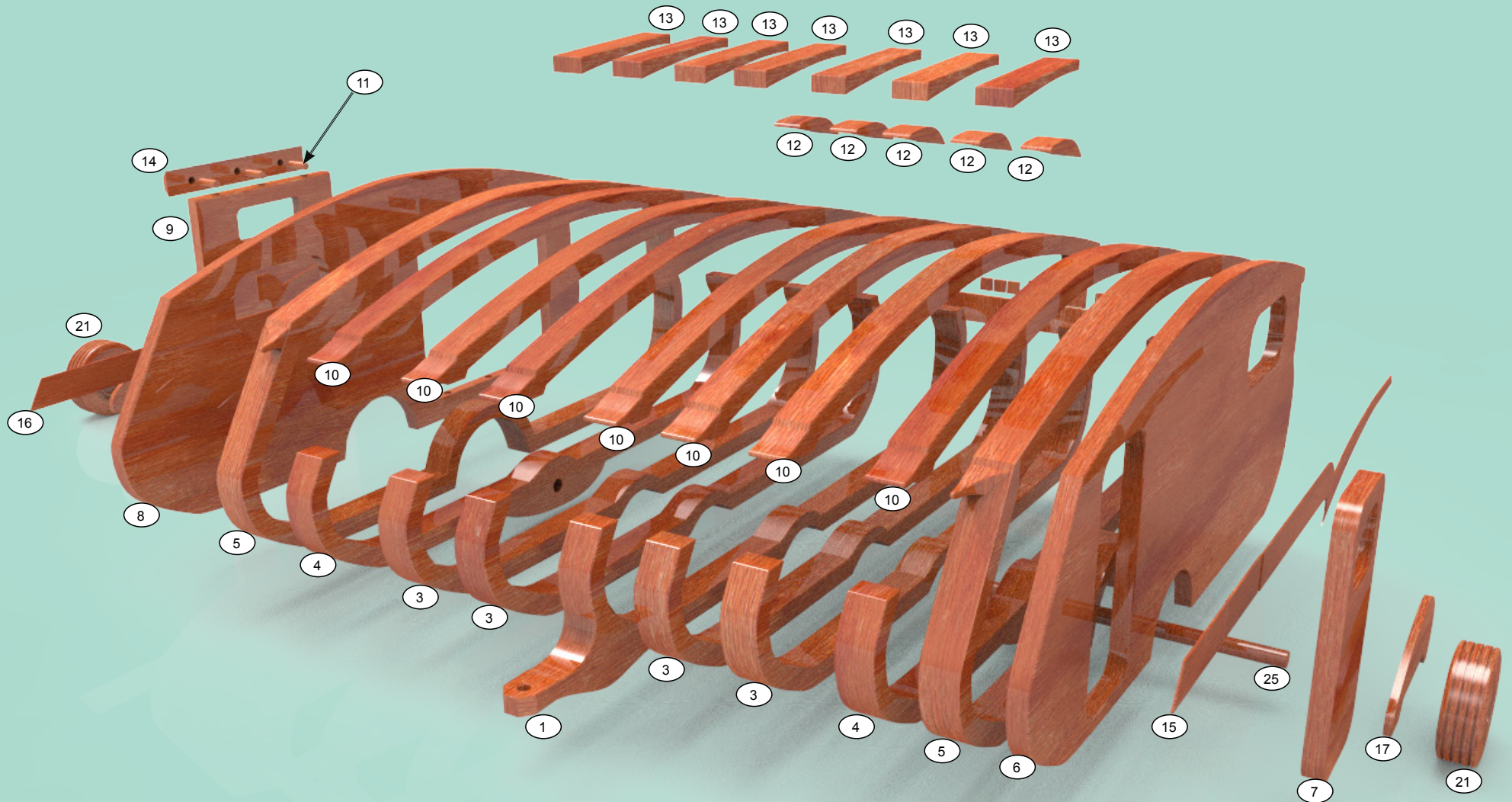
Page 55



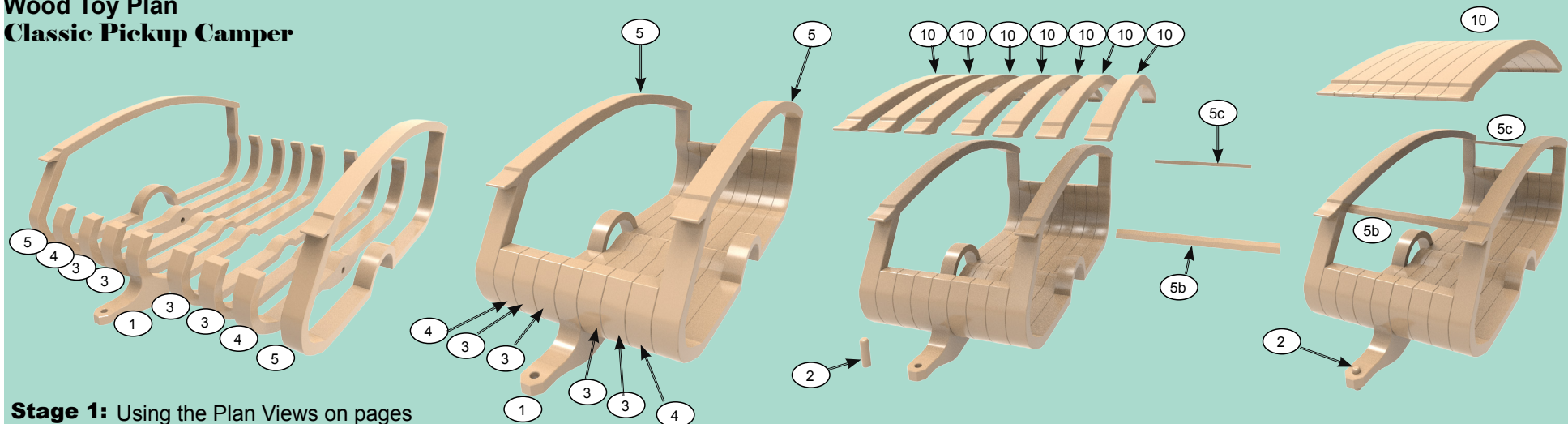
Page 56



The part list is just an example of the cad block size pieces of wood. Suggest you go over size a little bit with the pieces of wood when you apply the paper to the wood before you cut the pieces out.



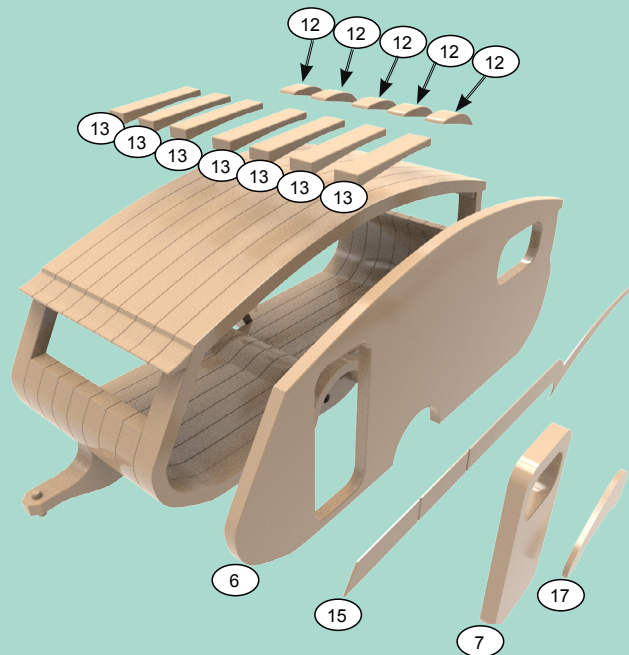
Wood Toy Plan Classic Pickup Camper



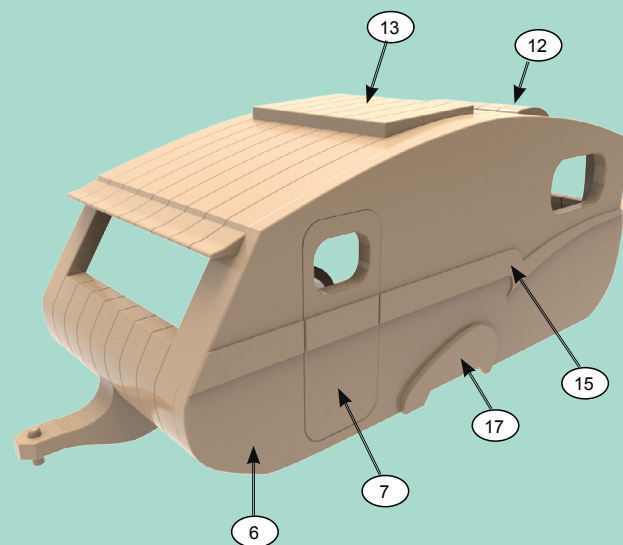
Stage 1: Using the Plan Views on pages 28-31 and page 23 as a guide, glue and clamp Parts 1 - 5 all together. Let the model dry before moving on to the next Stage.

Stage 2: Use stage 2 as a guide and for assembly. For the side view and front view for stage 1:

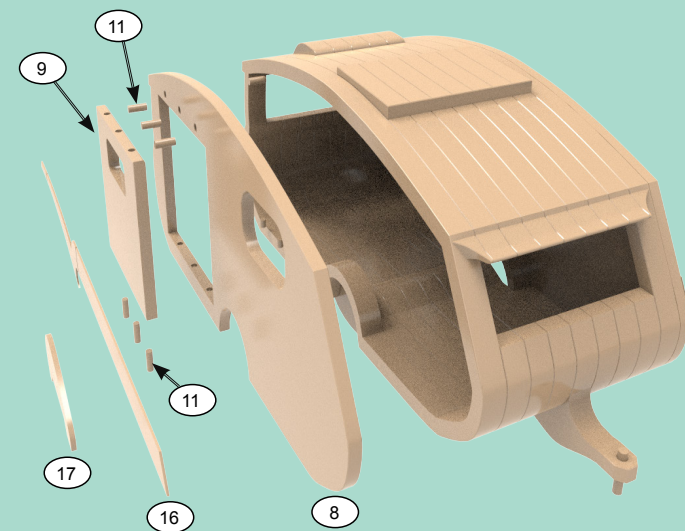
Stage 3: Glue and clamp the Parts 10 showing on stage 3. And then glue 5b & 5c in place. Let the model dry before moving on to the next Stage.



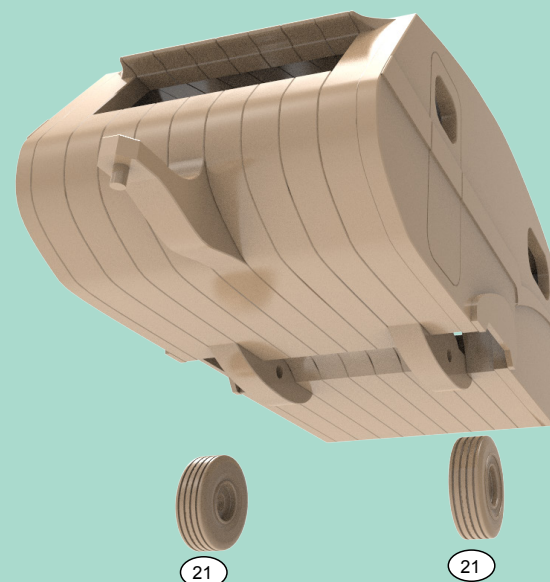
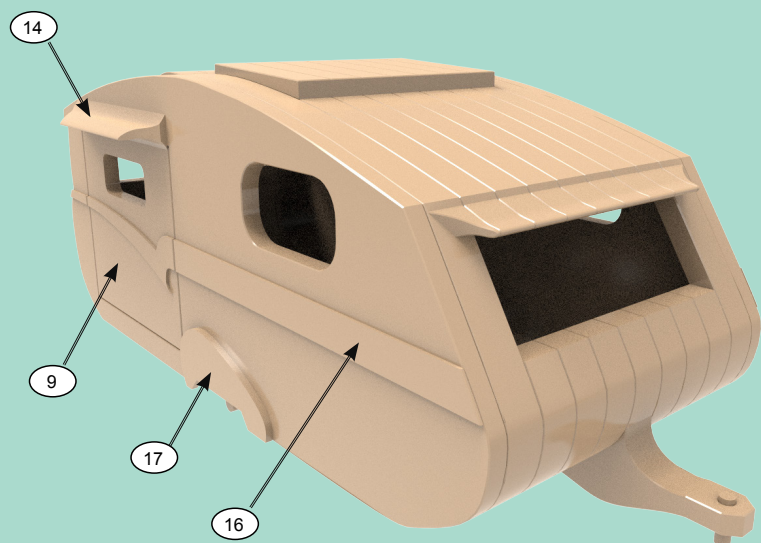
Stage 4: Glue and clamp Parts 13 & 12 all together. Then glue all the parts showing on stage 4. Let the model dry before moving on to the next Stage.



Stage 5: Use stage 5 as a guide and for assembly. For the side view and front view for stage 4:

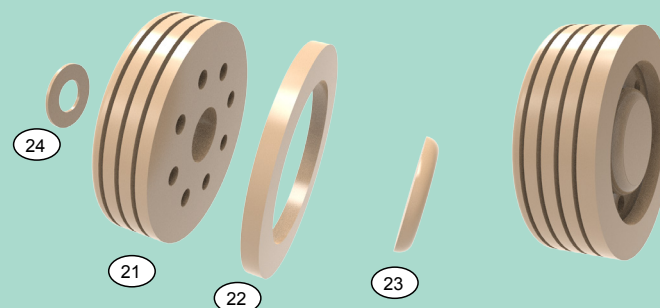
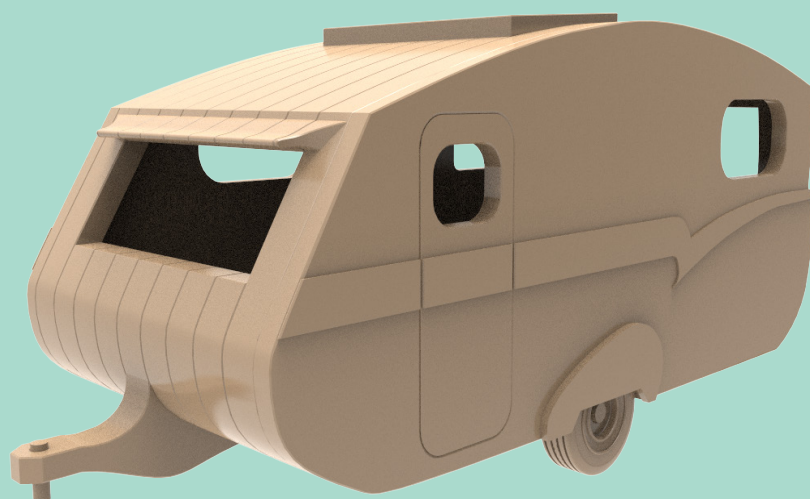


Stage 6: Glue and clamp Parts 16 & 17 all together. Let the model dry before moving on to the next Stage. See page 56 for door detail.



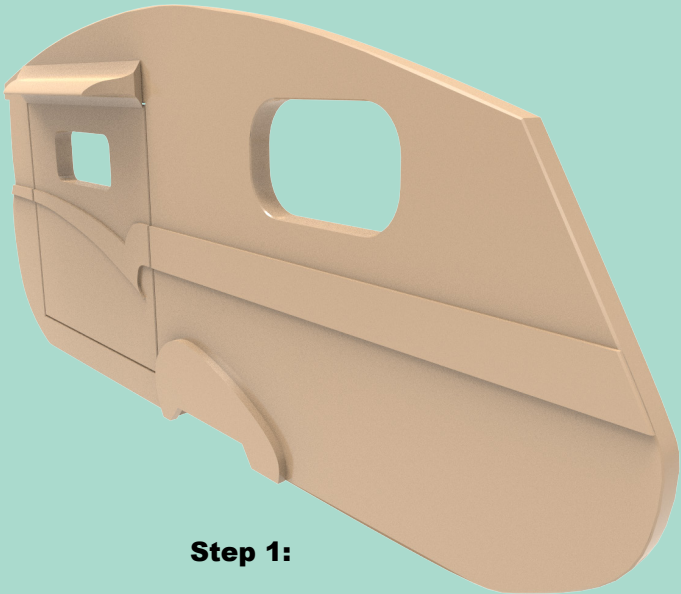
Part 21 Wheels
www.craftparts.com
Part #TWT150 Buy 2
1-1/2" Dia. x 1/2" thick
Hole size 1/4"

Stage 7: Allow parts 25 to rotate a round part 4.

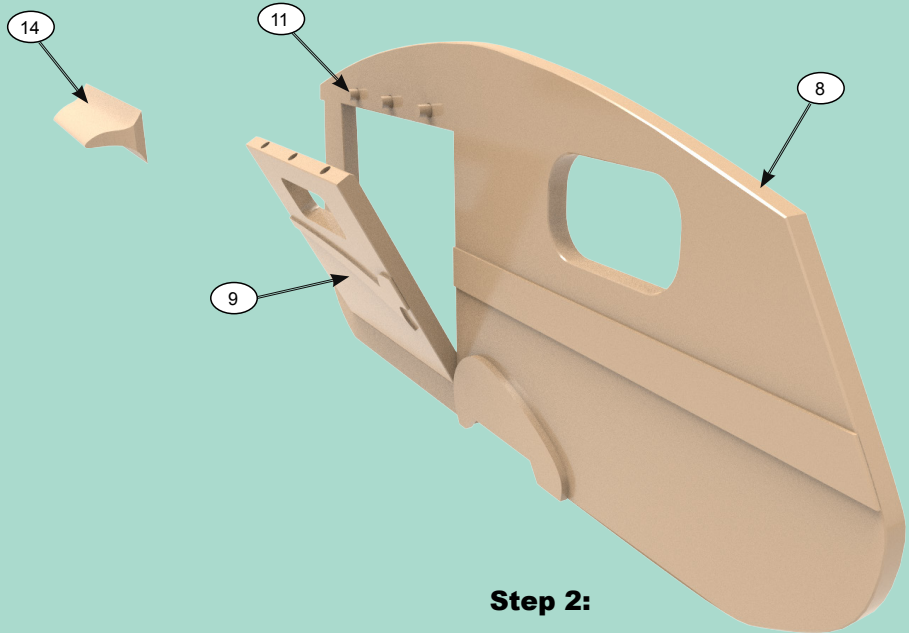


Stage 8: Glue and clamp Parts 21-22 & 23 all together Let the model dry before moving on to the next Stage

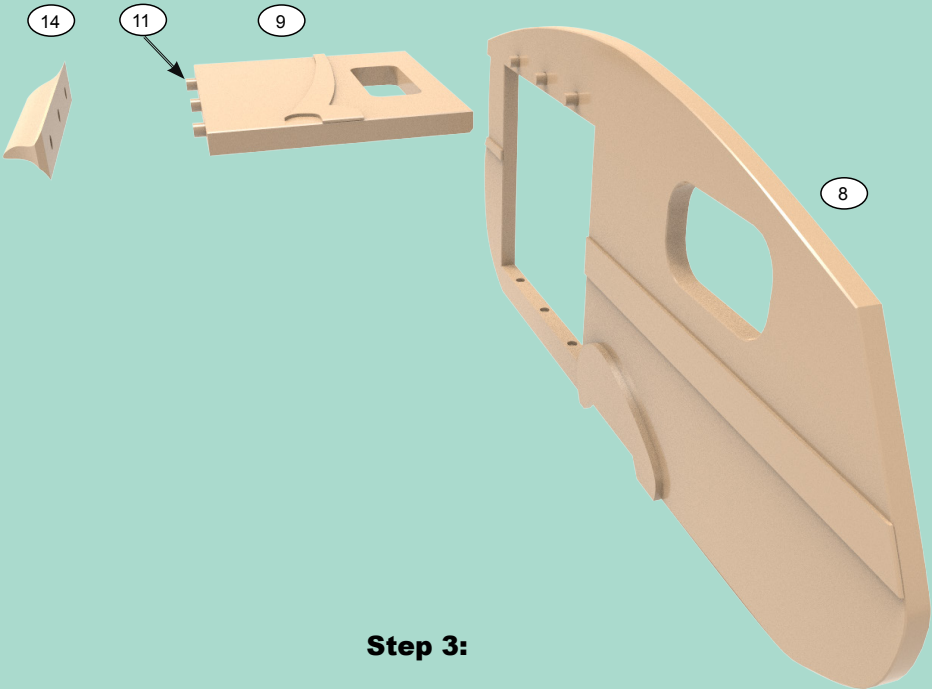
See page 56 for door detail.



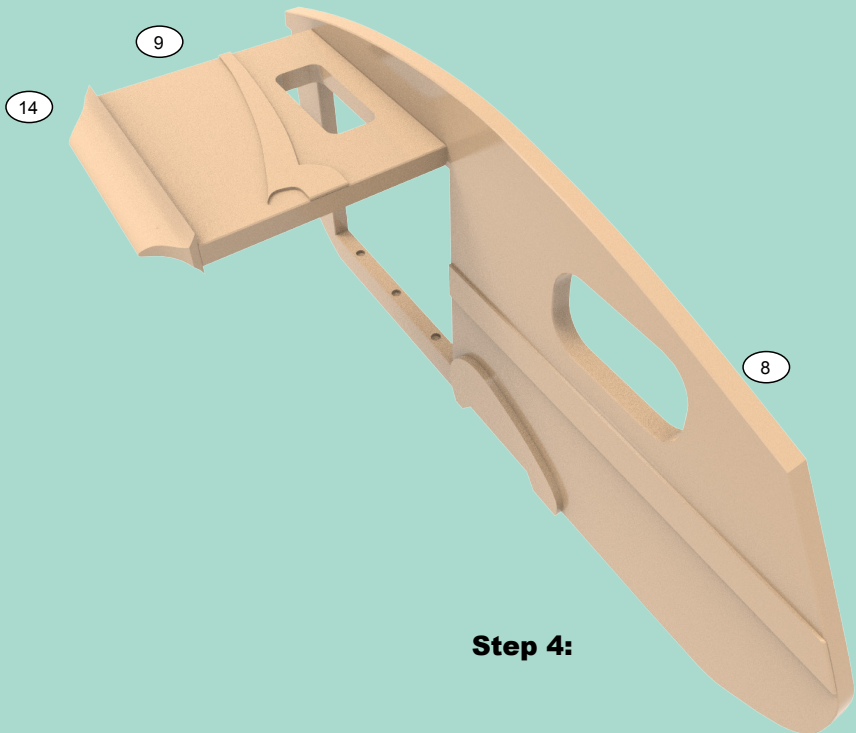
Step 1:



Step 2:

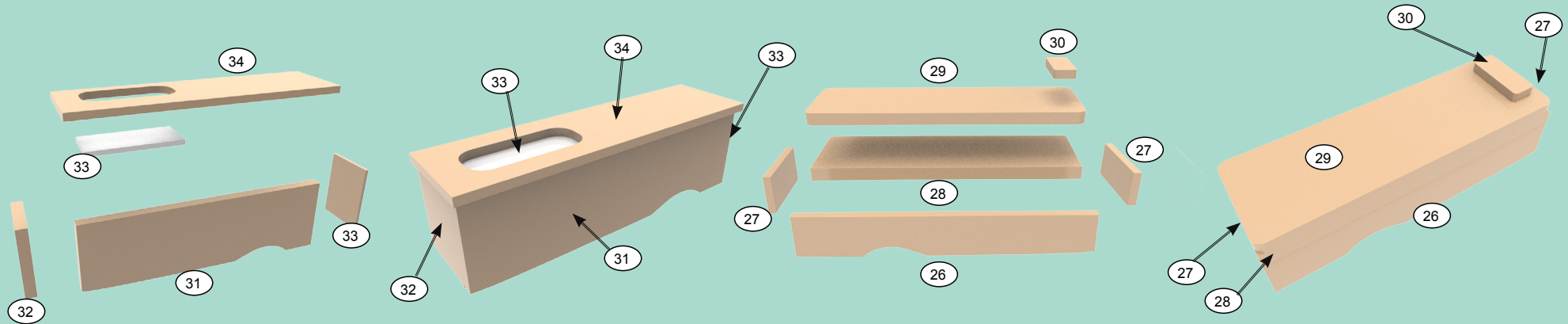


Step 3:



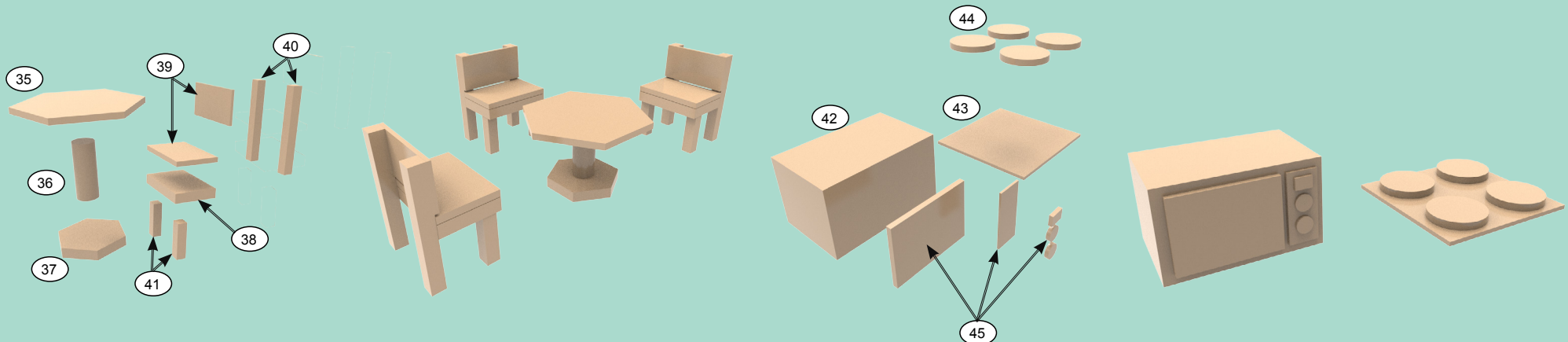
Step 4:

See page 55 & 57 for furniture detail.



Stage 9: Using the Plan Views on pages 57 as a guide, glue and clamp all Parts showing all together.

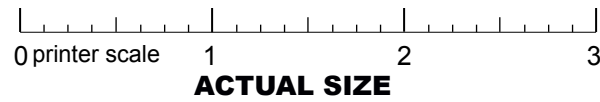
Stage 9: Using the Plan Views on pages 57 as a guide, glue and clamp all Parts showing all together.



Stage 10: Glue and clamp Parts 35 - 37 all together first. Then Glue and clamp parts 38 - 41 all together.

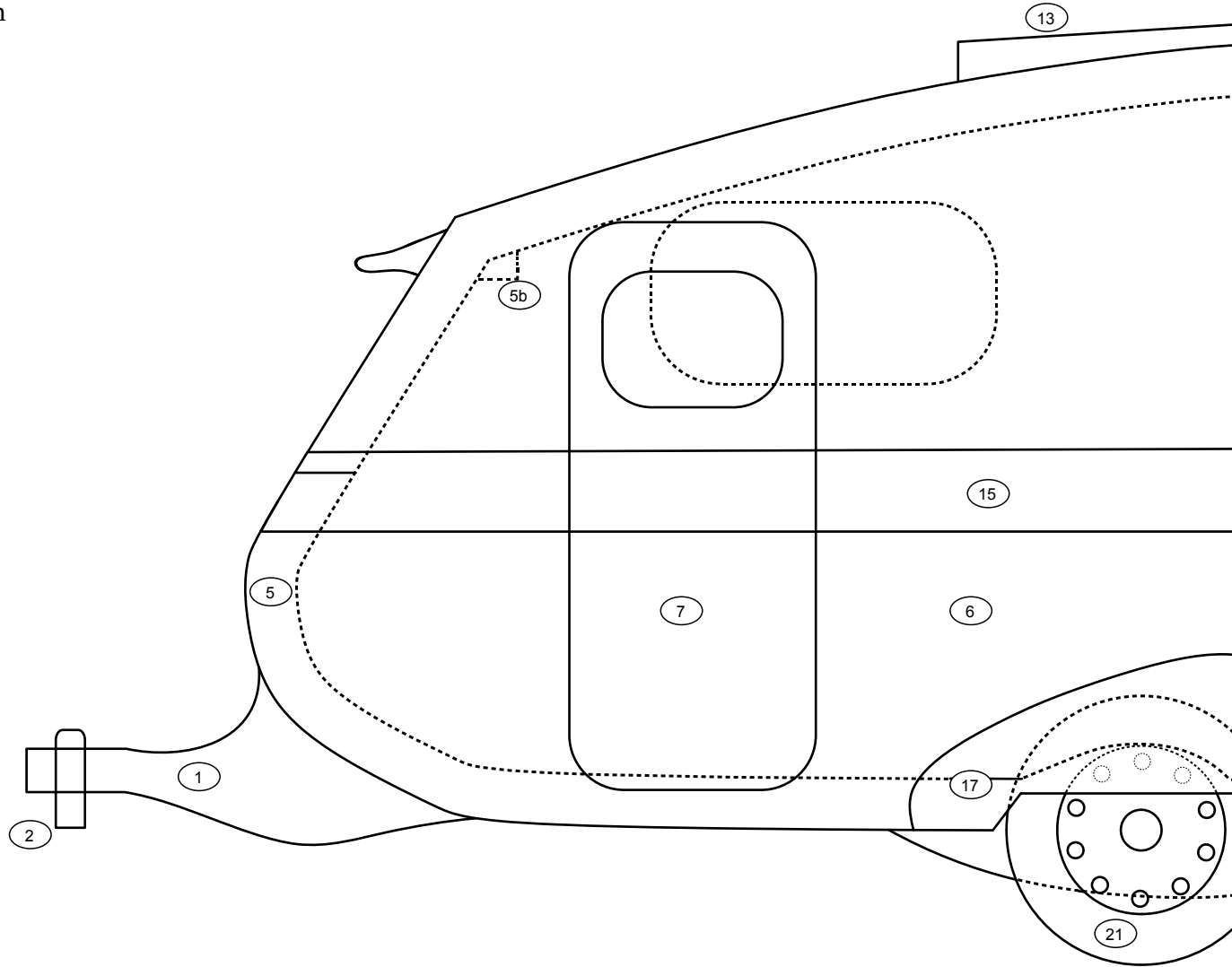
Stage 10: Glue and clamp Parts 42 - 44 all together.

Wood Toy Plan Classic Pickup Camper



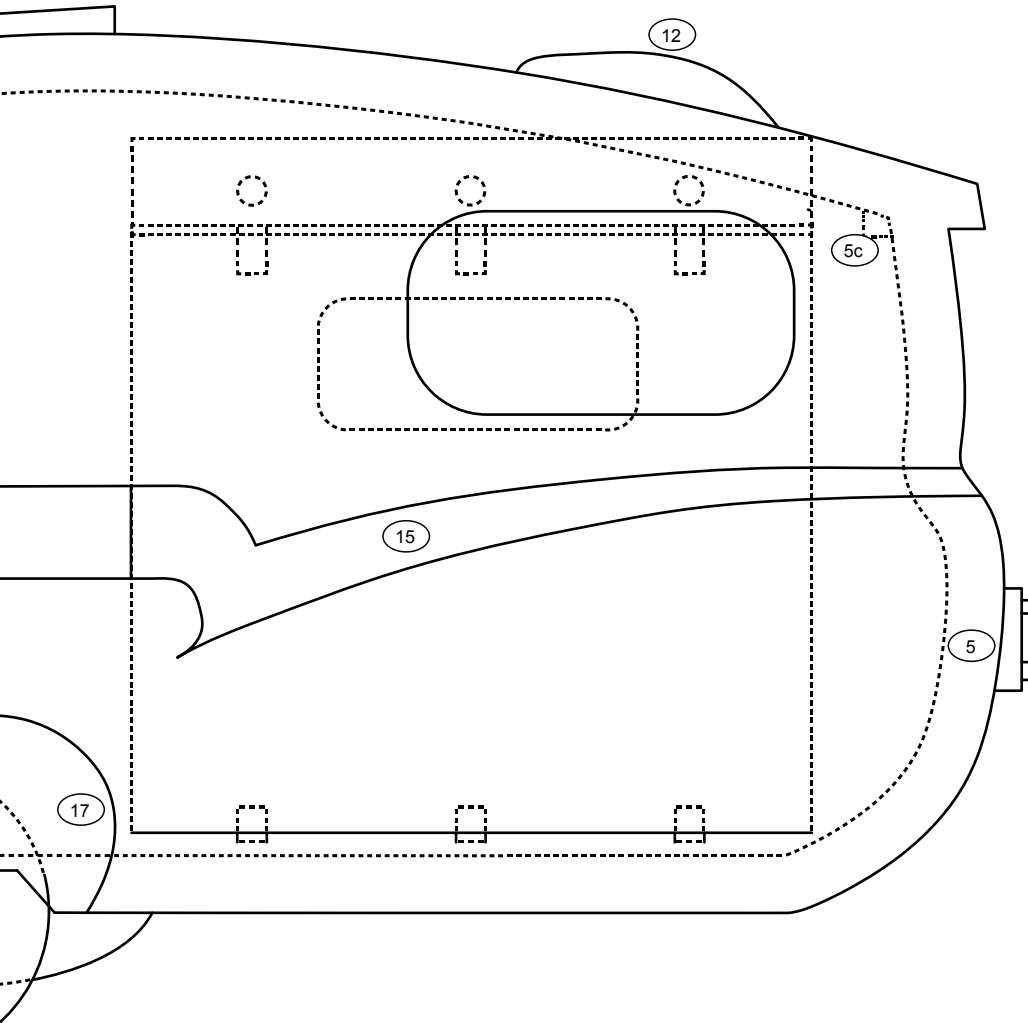
To view page 28-29 as a two-page spread in Adobe Reader:

1. Select View/Page Display/Two Page Scrolling
2. Select View/Page Display/Show Cover Page in Two Page View



To view page 28-29 as a two-page spread in Adobe Reader:

1. Select View/Page Display/Two Page Scrolling
2. Select View/Page Display/Show Cover Page in Two Page View

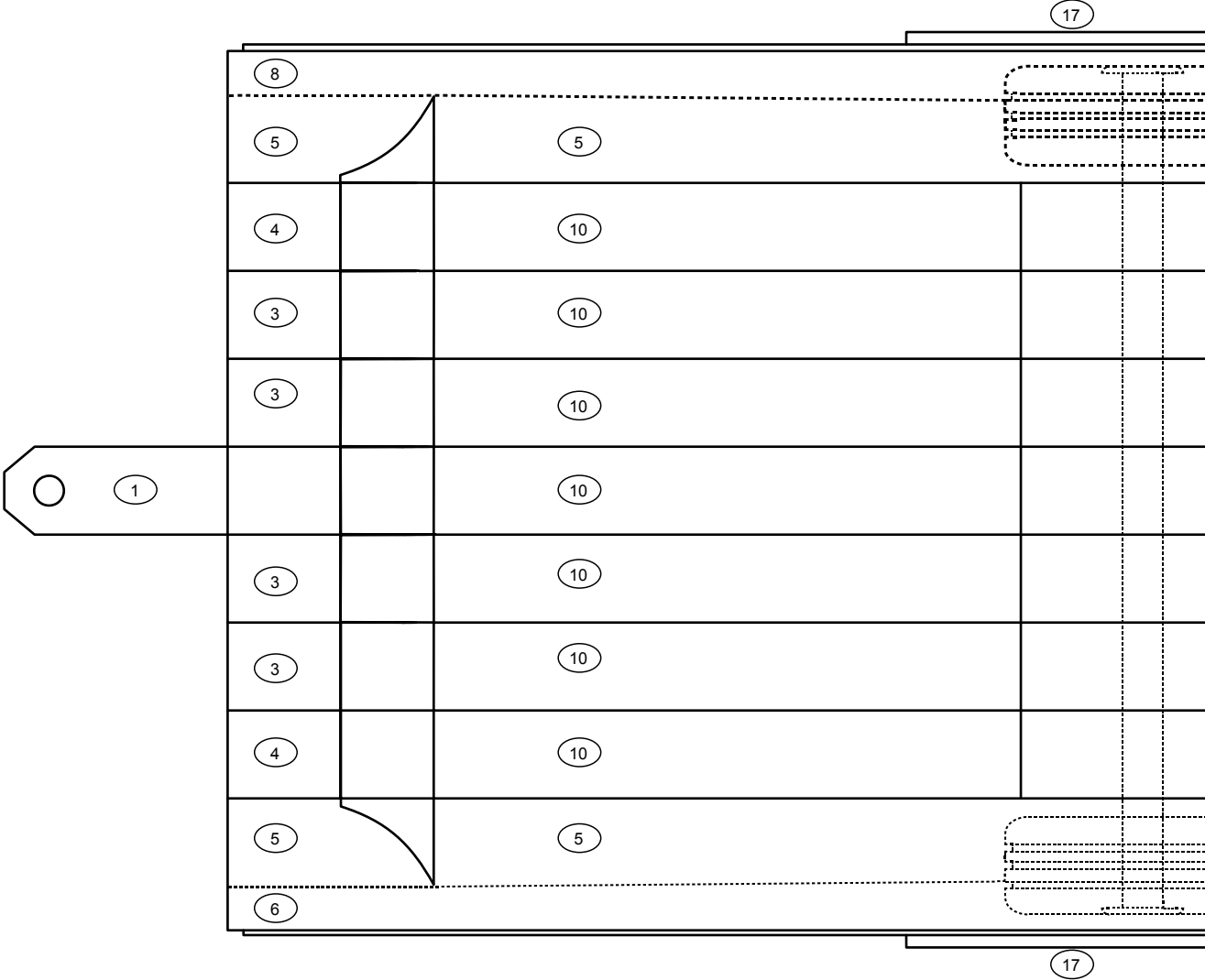


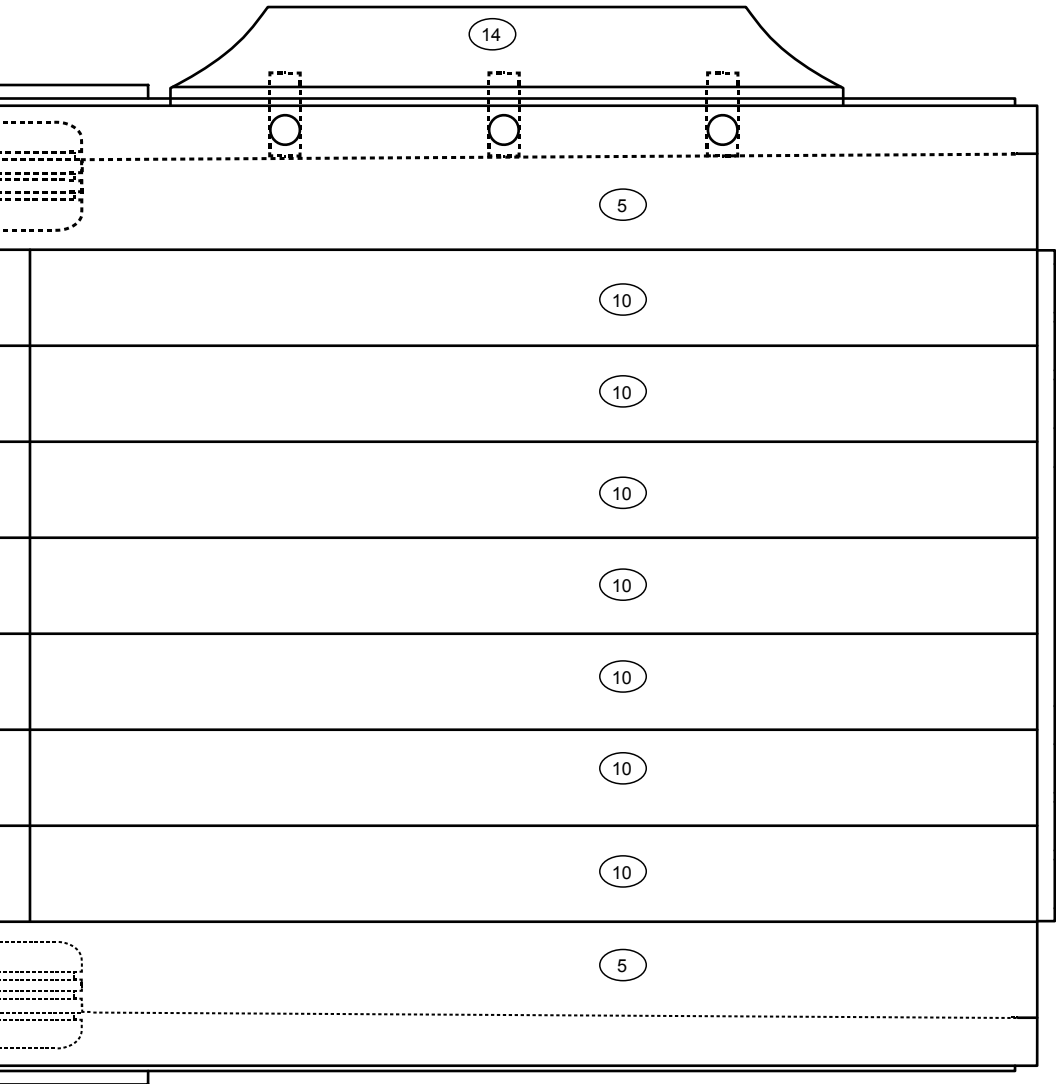
Wood Toy Plan
Classic Pickup Camper



To view page 30-31 as a two-page spread in Adobe Reader:

- 1. Select View/Page Display/Two Page Scrolling
- 2. Select View/Page Display/Show Cover Page in Two Page View



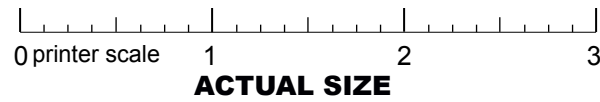


To view page 30-31 as a two-page spread in Adobe Reader:

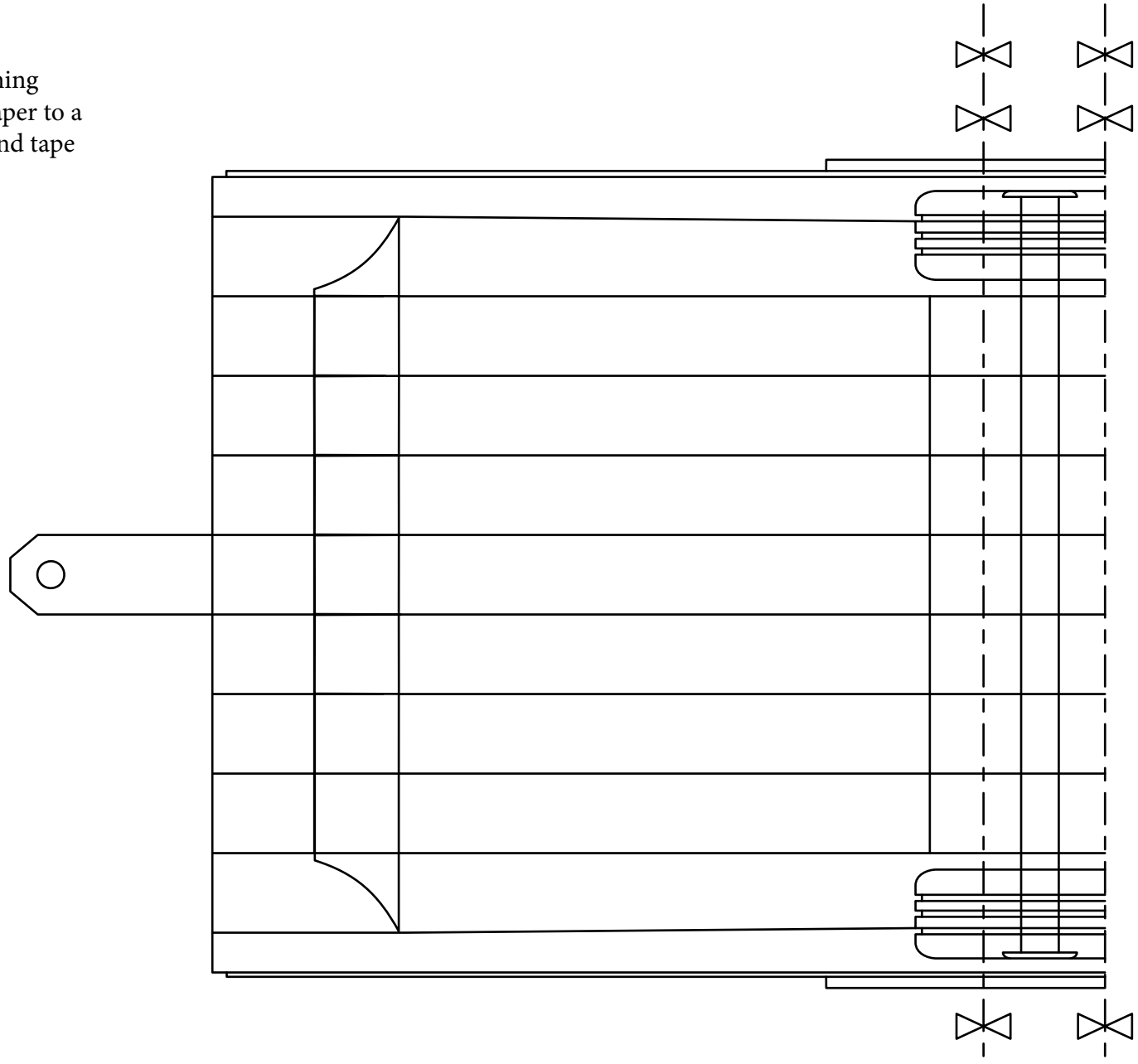
1. Select View/Page Display/Two Page Scrolling
2. Select View/Page Display/Show Cover Page in Two Page View

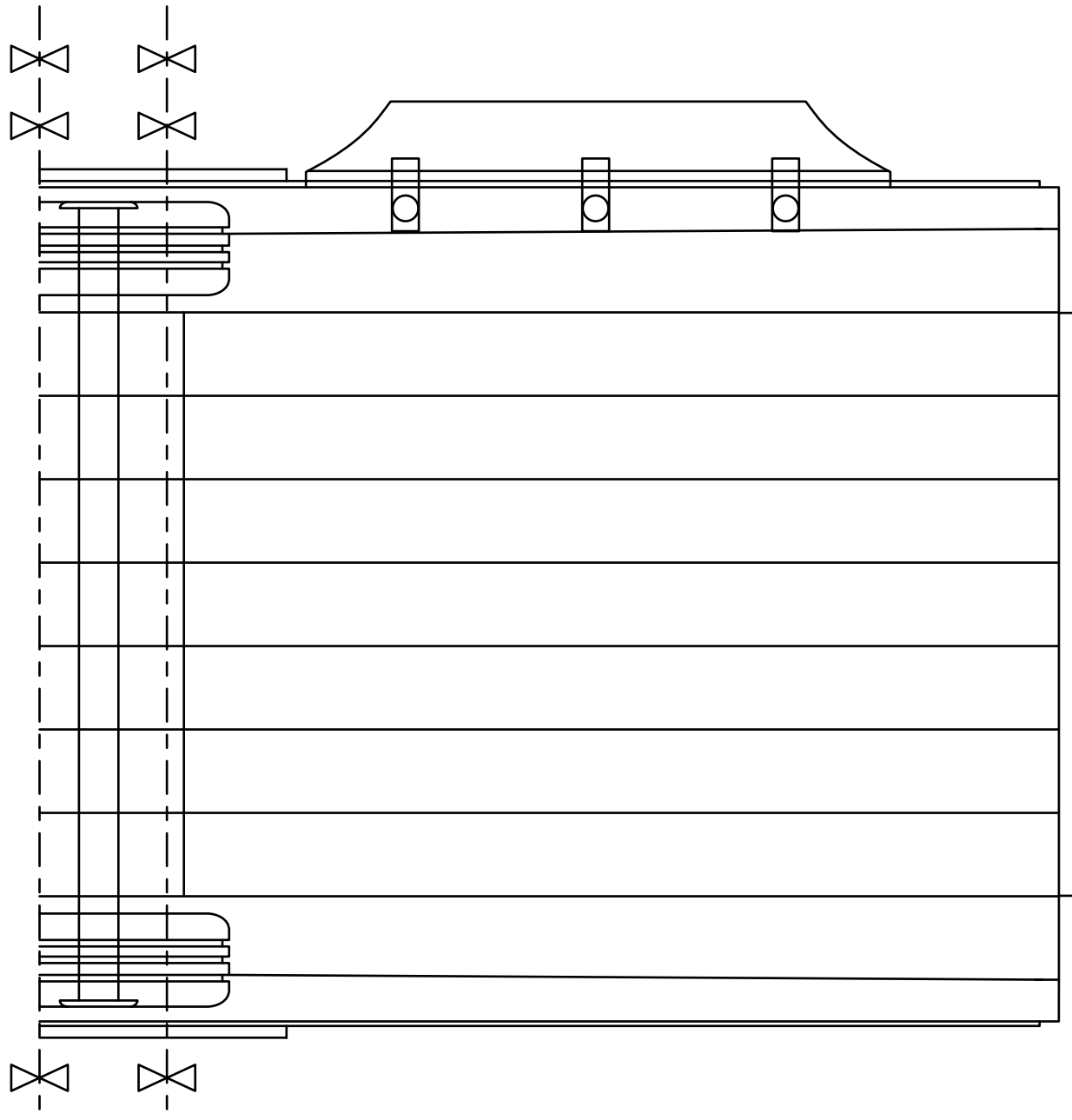
Wood Toy Plan

Classic Pickup Camper



How to line up printed paper for joining together hold up the two pieces of paper to a glass window line up the four lines and tape the two pieces of paper together.





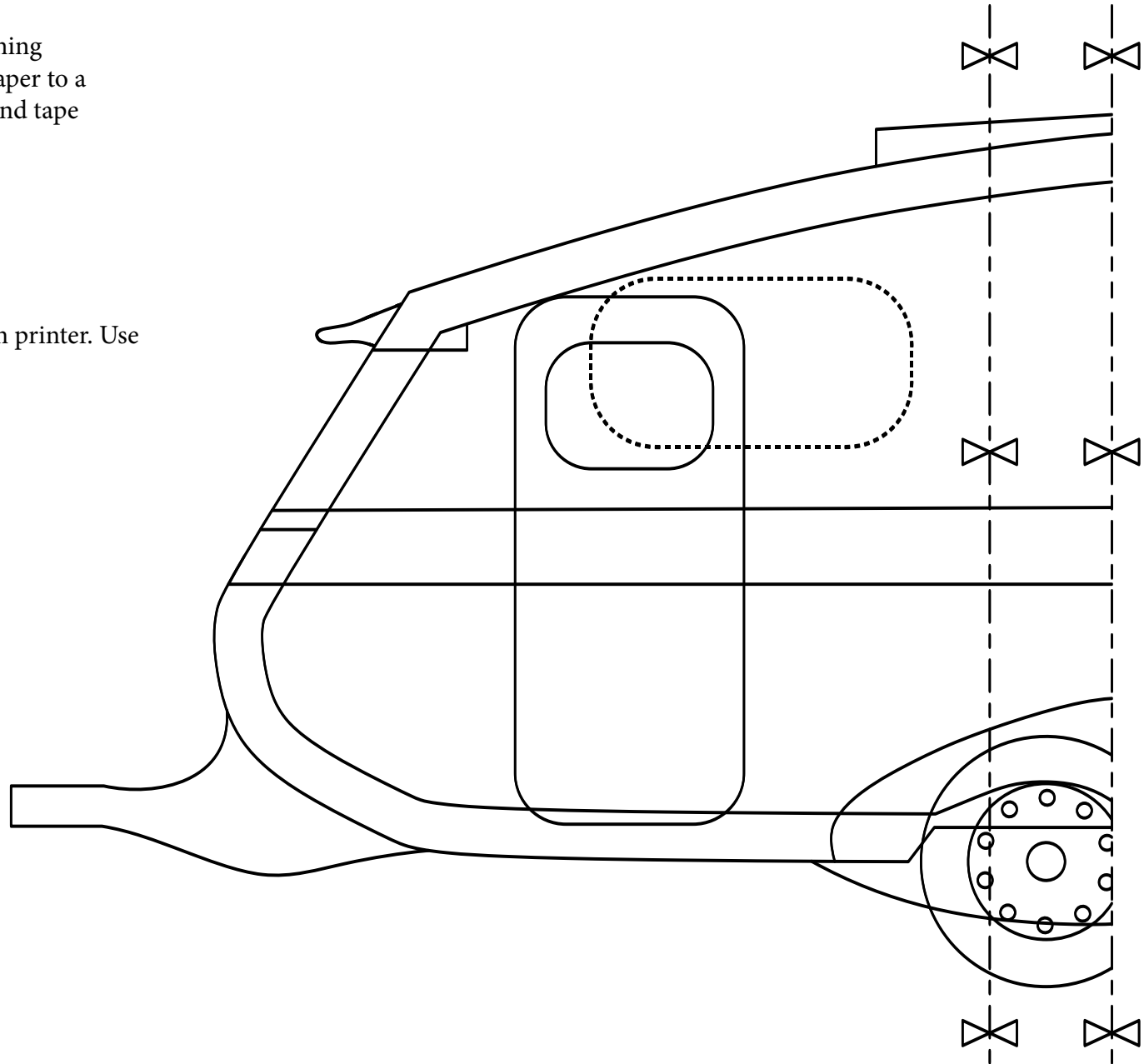
How to line up printed paper for joining together hold up the two pieces of paper to a glass window line up the four lines and tape the two pieces of paper together.

Wood Toy Plan Classic Pickup Camper



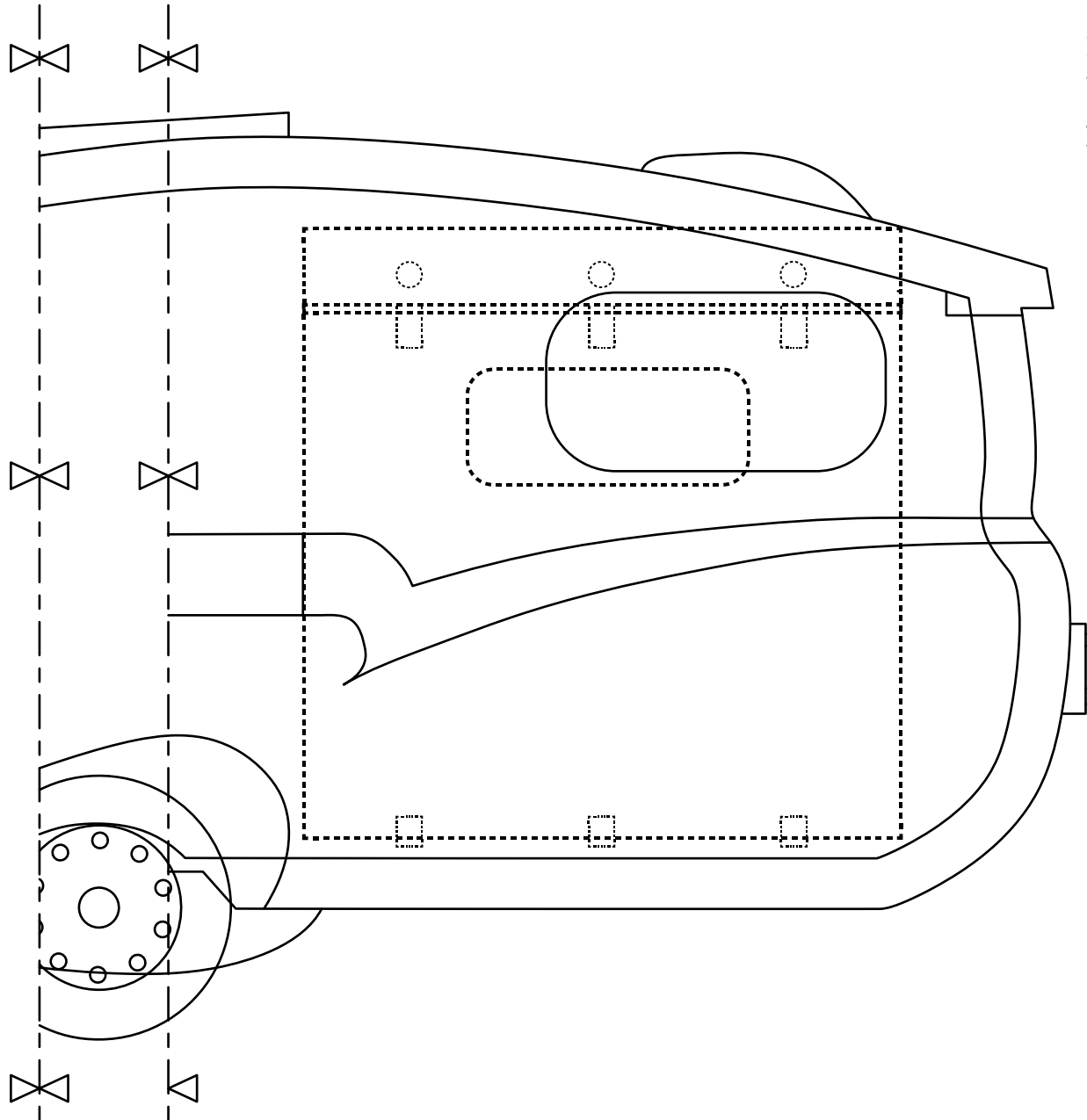
How to line up printed paper for joining together hold up the two pieces of paper to a glass window line up the four lines and tape the two pieces of paper together.

You can print this plans on your own printer. Use no scaling on print output.





Wood Toy Plan Classic Pickup Camper



How to line up printed paper for joining together hold up the two pieces of paper to a glass window line up the four lines and tape the two pieces of paper together.

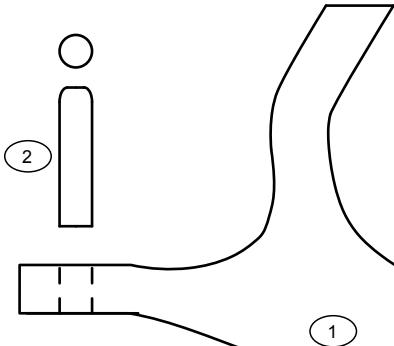
You can print this plans on your own printer. Use no scaling on print output.

Wood Toy Plan
Classic Pickup Camper



How to line up printed paper for joining together hold up the two pieces of paper to a glass window line up the four lines and tape the two pieces of paper together.

2. 1/4" diameter x 3/4" make 1



1. 1/2" x 2-3/4" x 12-1/2" make 1

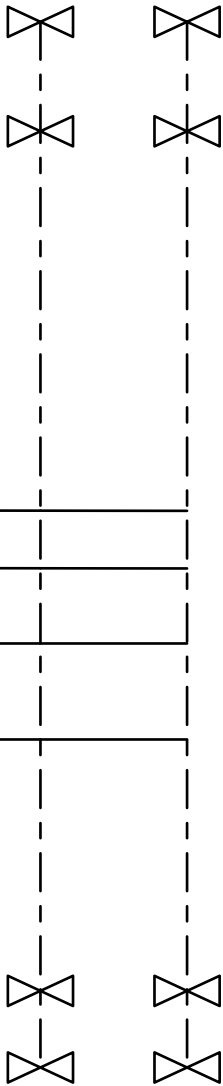


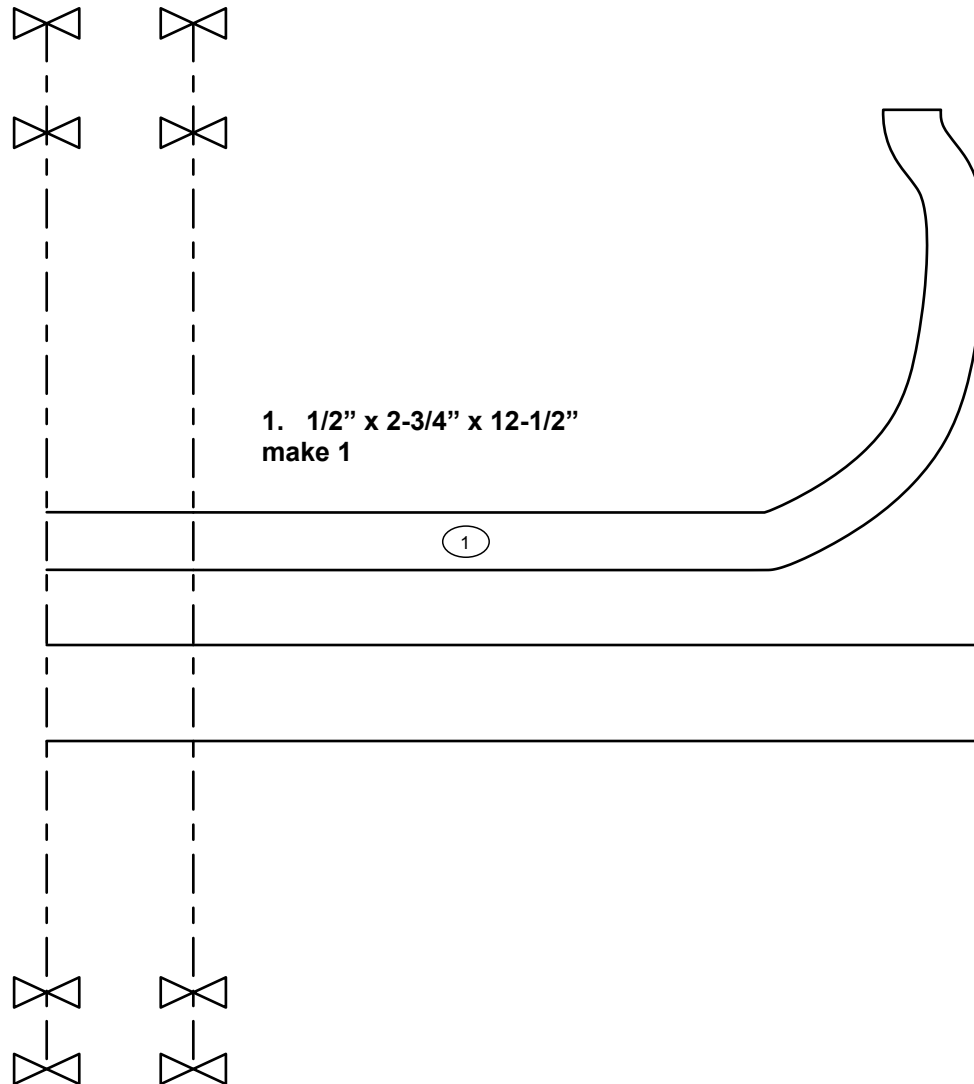
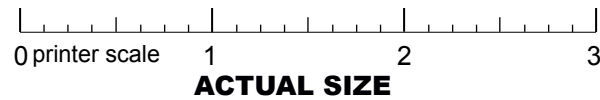
1/4" dia hole thru



Simply print out the drawing patterns and apply the patterns to a piece of timber and cut out with a scroll saw.

You can print this plans on your own printer. Use no scaling on print output.



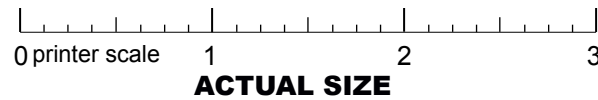


How to line up printed paper for joining together hold up the two pieces of paper to a glass window line up the four lines and tape the two pieces of paper together.

Simply print out the drawing patterns and apply the patterns to a piece of timber and cut out with a scroll saw.

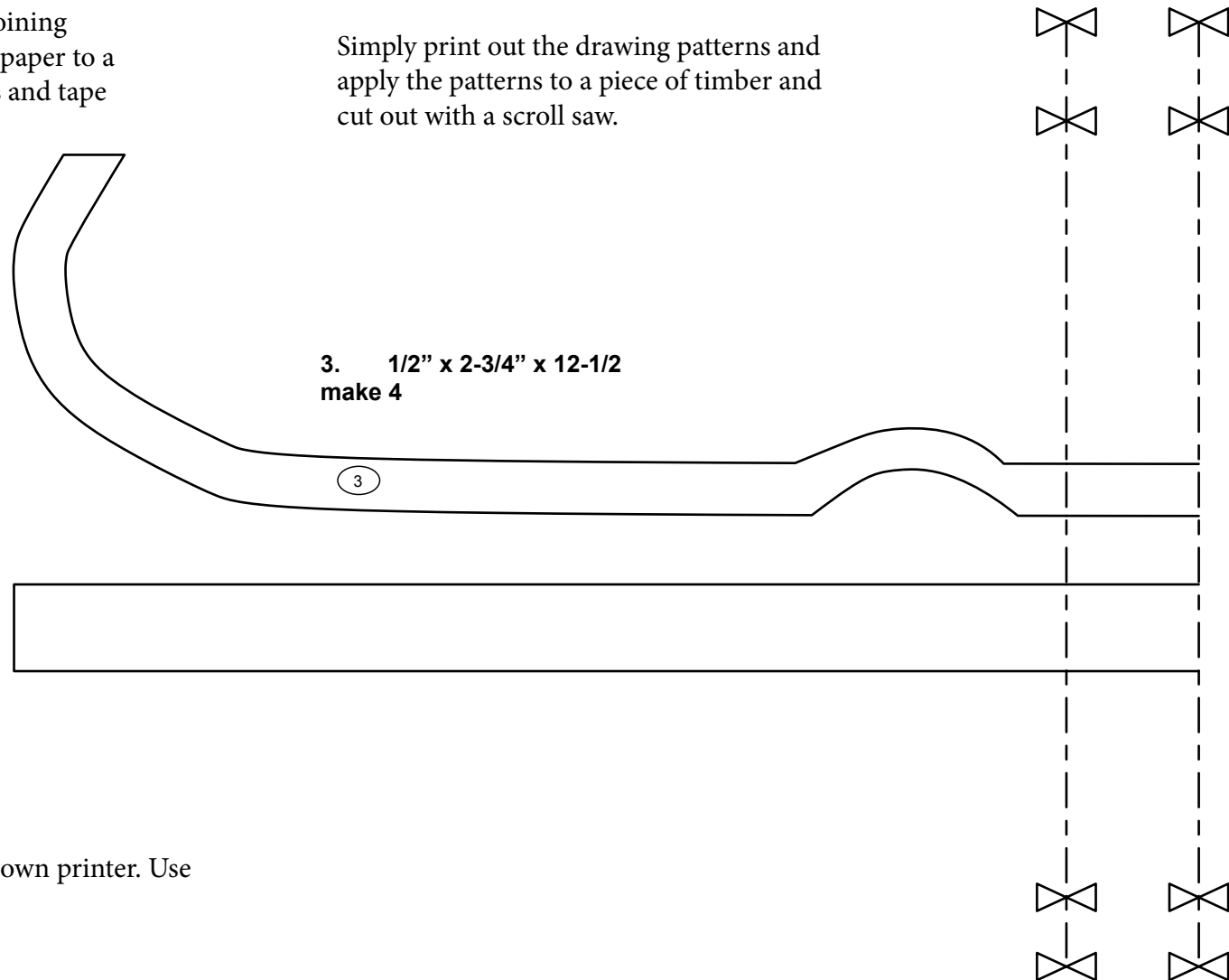
You can print this plans on your own printer. Use no scaling on print output.

Wood Toy Plan Classic Pickup Camper

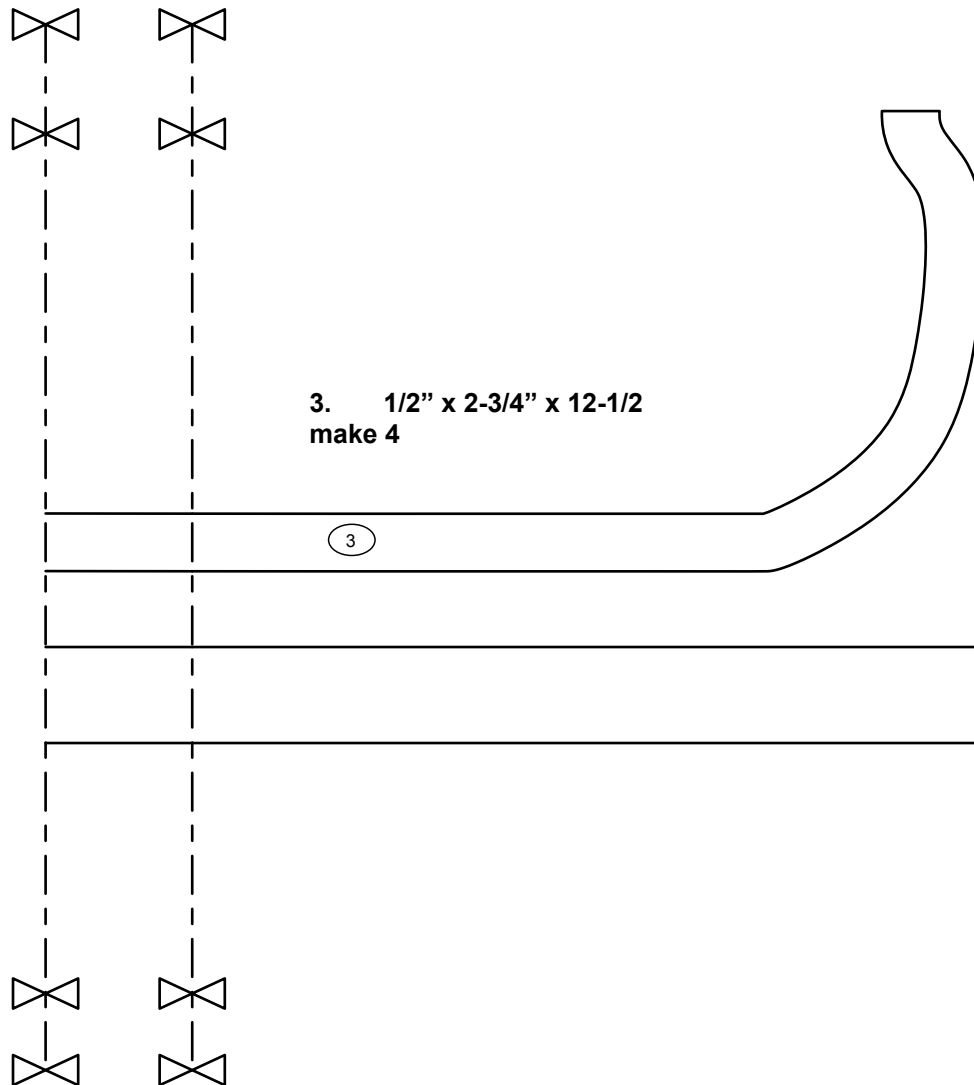
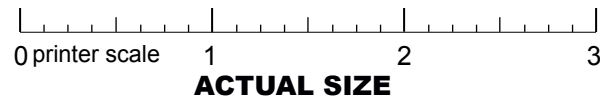


How to line up printed paper for joining together hold up the two pieces of paper to a glass window line up the four lines and tape the two pieces of paper together.

Simply print out the drawing patterns and apply the patterns to a piece of timber and cut out with a scroll saw.



You can print this plans on your own printer. Use no scaling on print output.



How to line up printed paper for joining together hold up the two pieces of paper to a glass window line up the four lines and tape the two pieces of paper together.

Simply print out the drawing patterns and apply the patterns to a piece of timber and cut out with a scroll saw.

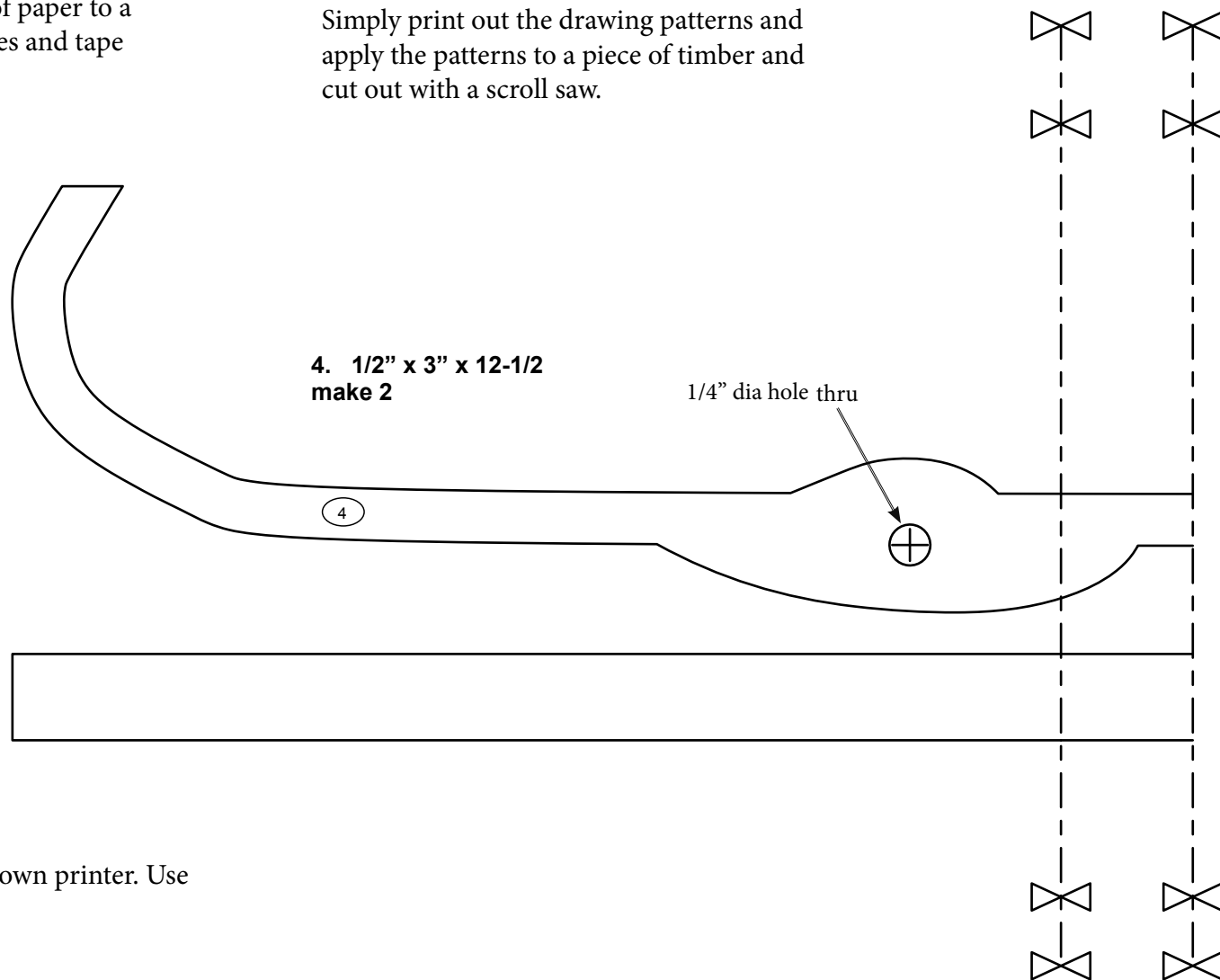
You can print this plans on your own printer. Use no scaling on print output.

Wood Toy Plan Classic Pickup Camper

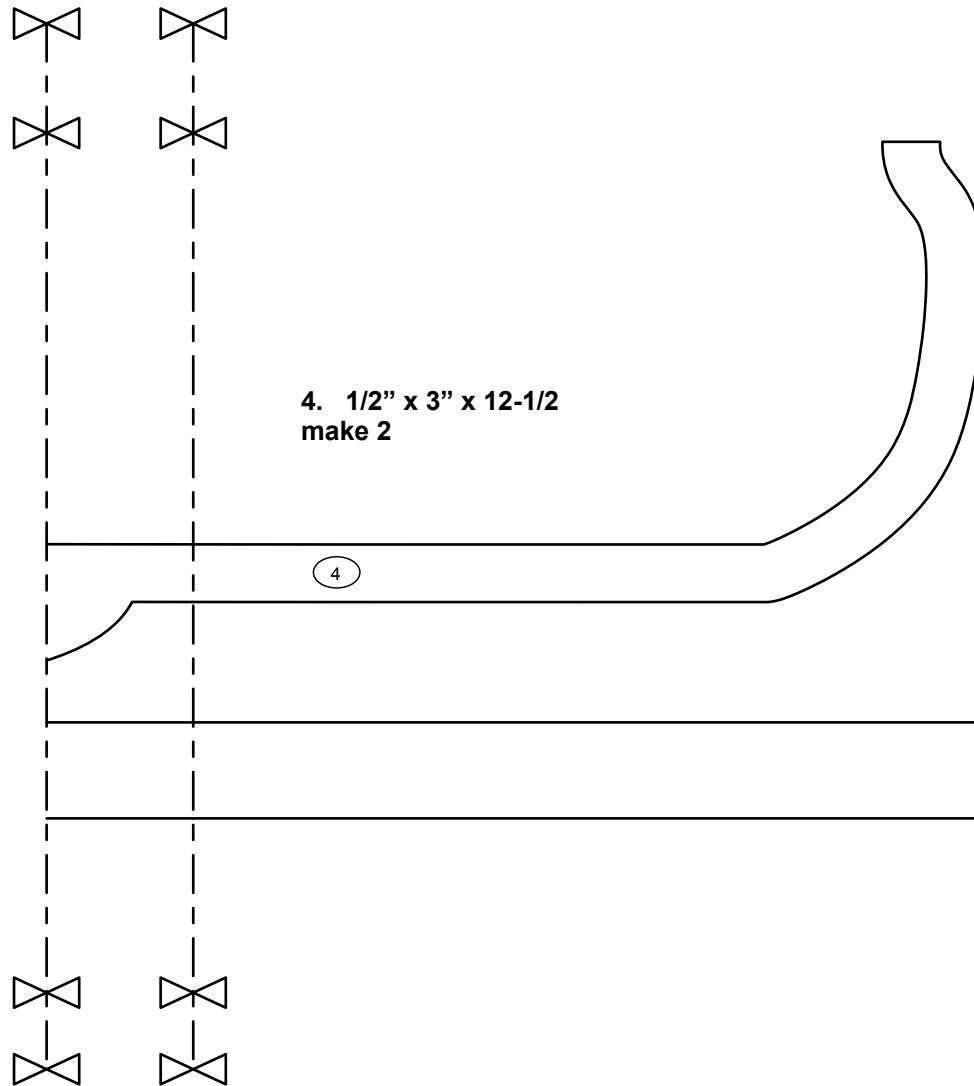


How to line up printed paper for joining together hold up the two pieces of paper to a glass window line up the four lines and tape the two pieces of paper together.

Simply print out the drawing patterns and apply the patterns to a piece of timber and cut out with a scroll saw.



You can print this plans on your own printer. Use no scaling on print output.



How to line up printed paper for joining together hold up the two pieces of paper to a glass window line up the four lines and tape the two pieces of paper together.

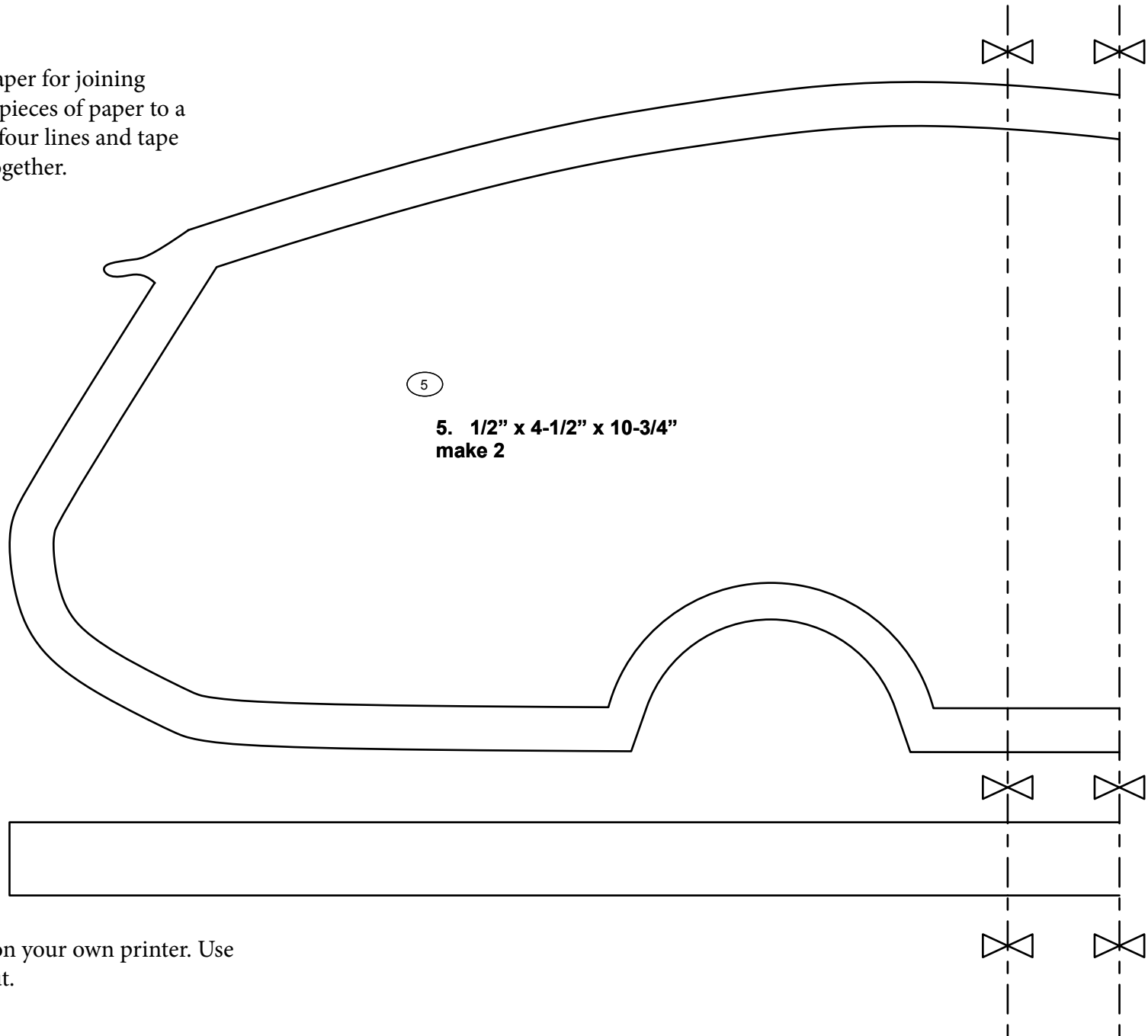
Simply print out the drawing patterns and apply the patterns to a piece of timber and cut out with a scroll saw.

You can print this plans on your own printer. Use no scaling on print output.

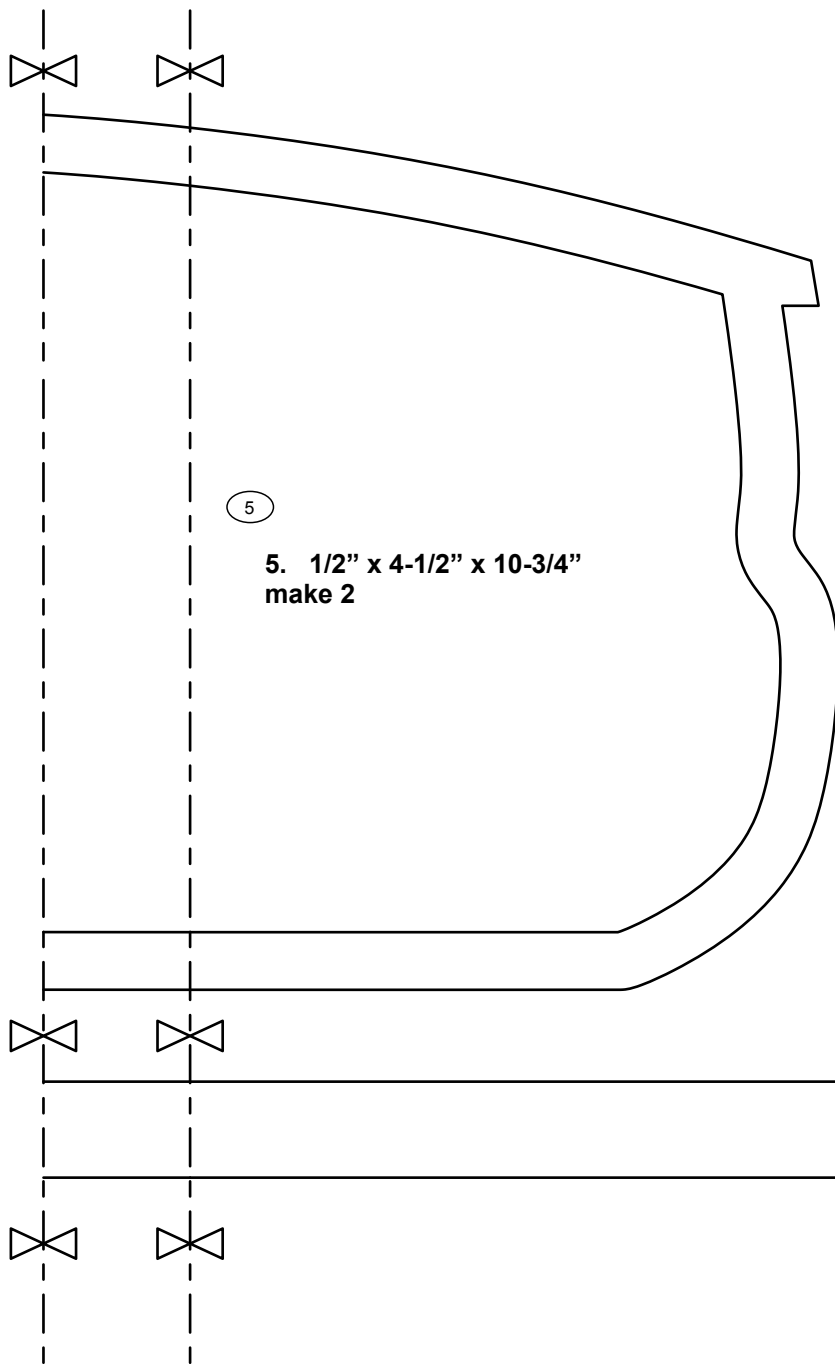
Wood Toy Plan Classic Pickup Camper



How to line up printed paper for joining together hold up the two pieces of paper to a glass window line up the four lines and tape the two pieces of paper together.



You can print this plans on your own printer. Use no scaling on print output.



How to line up printed paper for joining together hold up the two pieces of paper to a glass window line up the four lines and tape the two pieces of paper together.

Simply print out the drawing patterns and apply the patterns to a piece of timber and cut out with a scroll saw.

You can print this plans on your own printer. Use no scaling on print output.

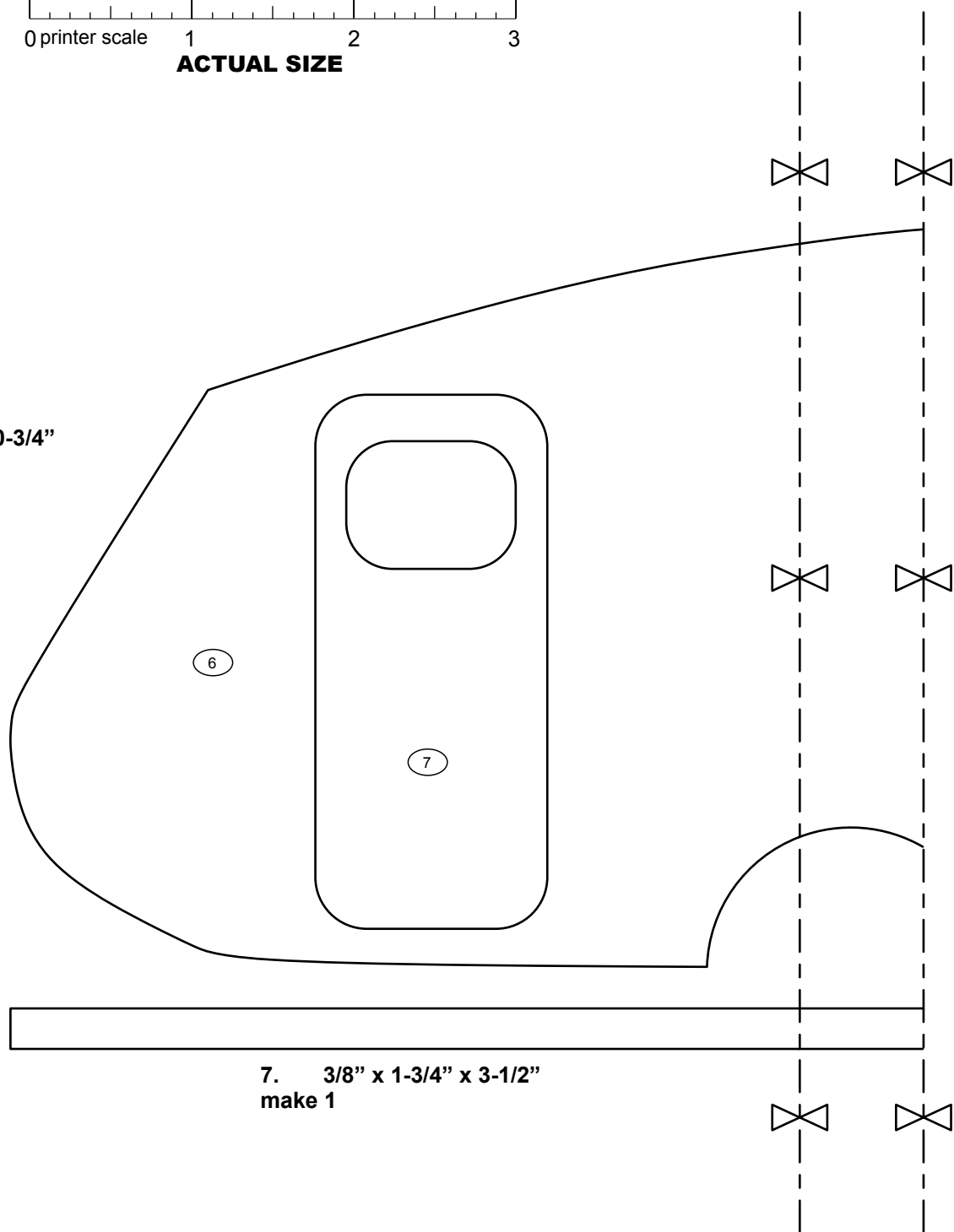
Wood Toy Plan Classic Pickup Camper



How to line up printed paper for joining together hold up the two pieces of paper to a glass window line up the four lines and tape the two pieces of paper together.

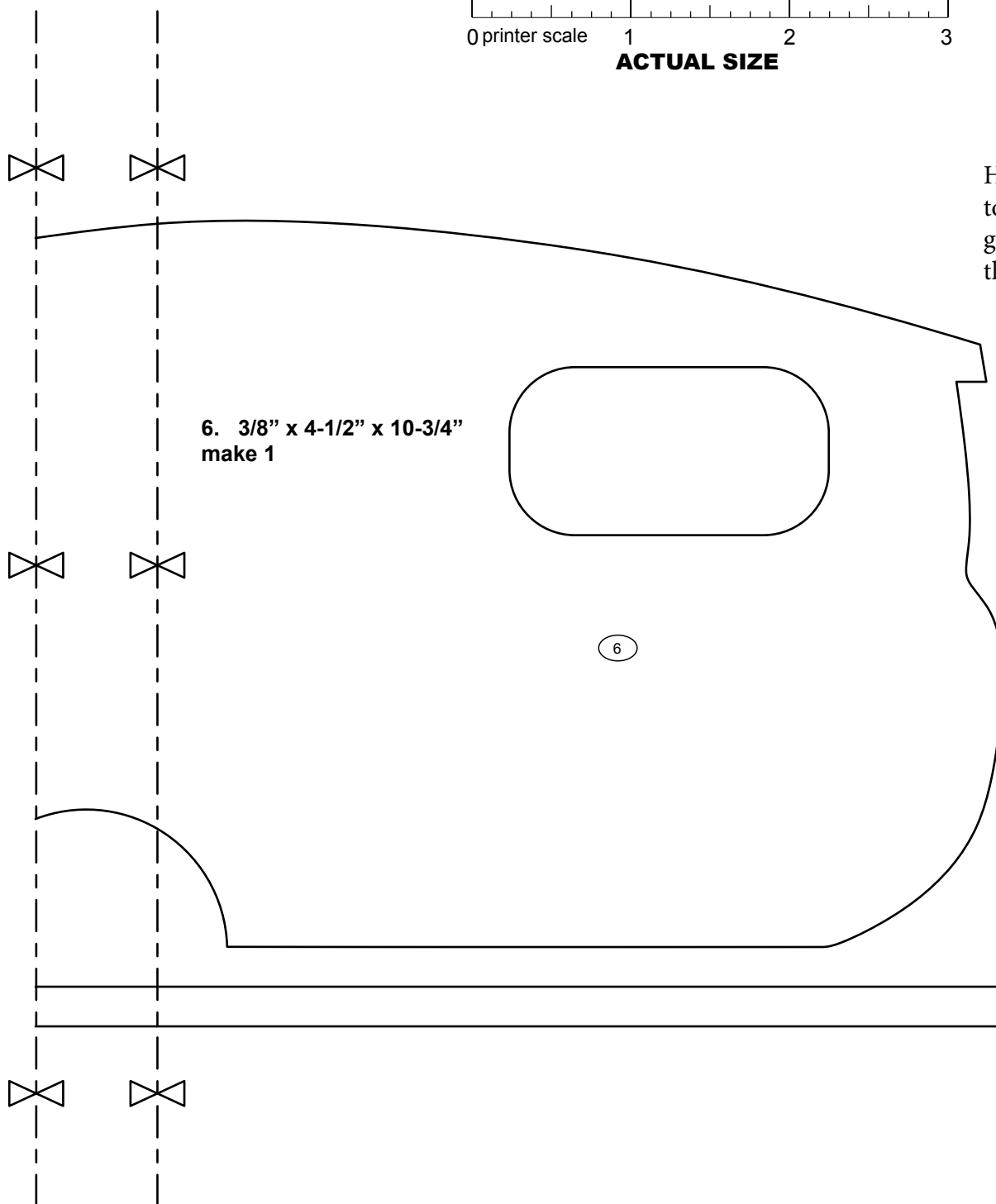
6. $\frac{3}{8}$ " x $4\frac{1}{2}$ " x $10\frac{3}{4}$ "
make 1

Simply print out the drawing patterns and apply the patterns to a piece of timber and cut out with a scroll saw.



7. $\frac{3}{8}$ " x $1\frac{3}{4}$ " x $3\frac{1}{2}$ "
make 1

You can print this plans on your own printer. Use no scaling on print output.



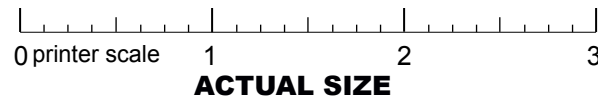
6. $3/8'' \times 4-1/2'' \times 10-3/4''$
make 1

How to line up printed paper for joining together hold up the two pieces of paper to a glass window line up the four lines and tape the two pieces of paper together.

Simply print out the drawing patterns and apply the patterns to a piece of timber and cut out with a scroll saw.

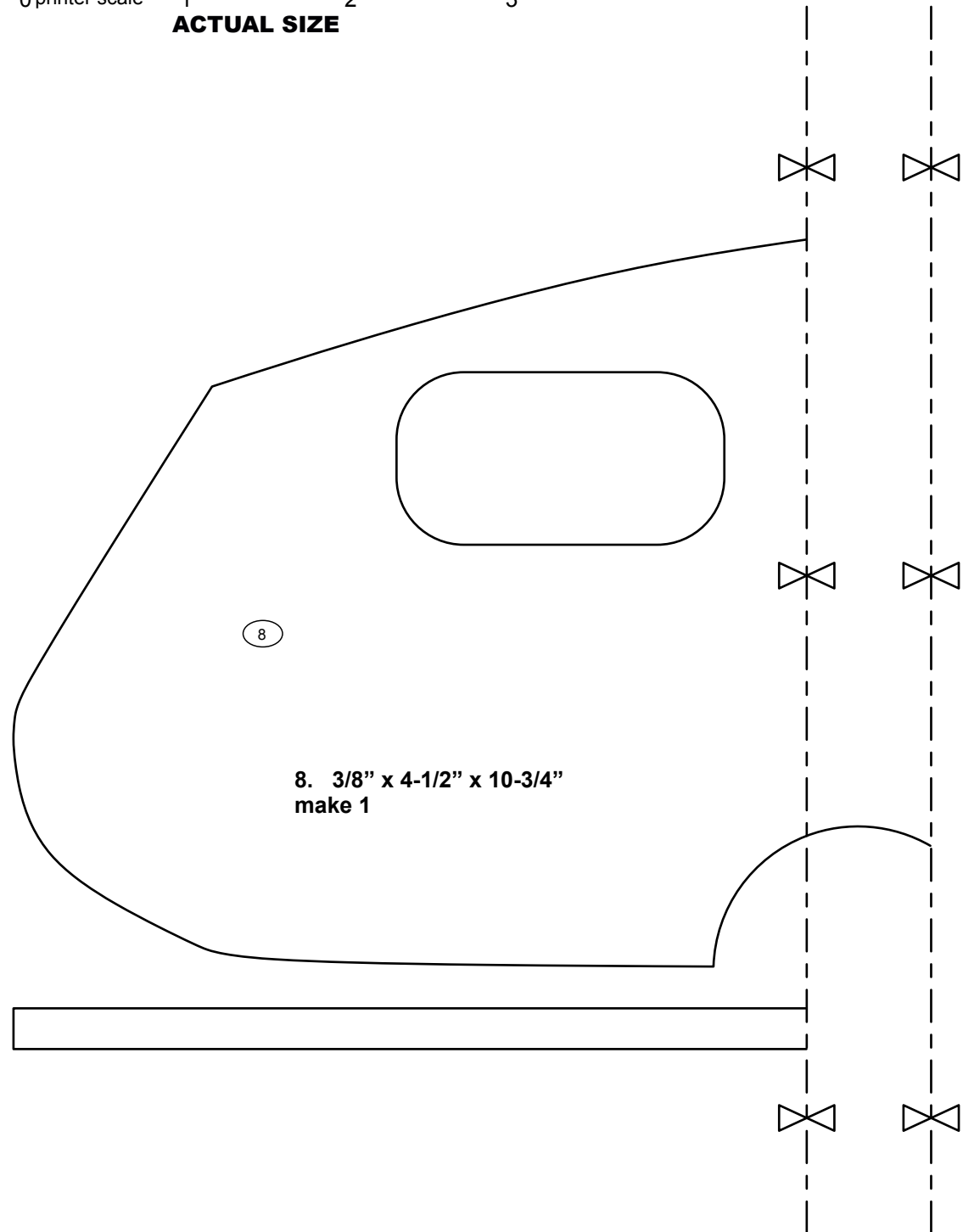
You can print this plans on your own printer. Use no scaling on print output.

Wood Toy Plan Classic Pickup Camper

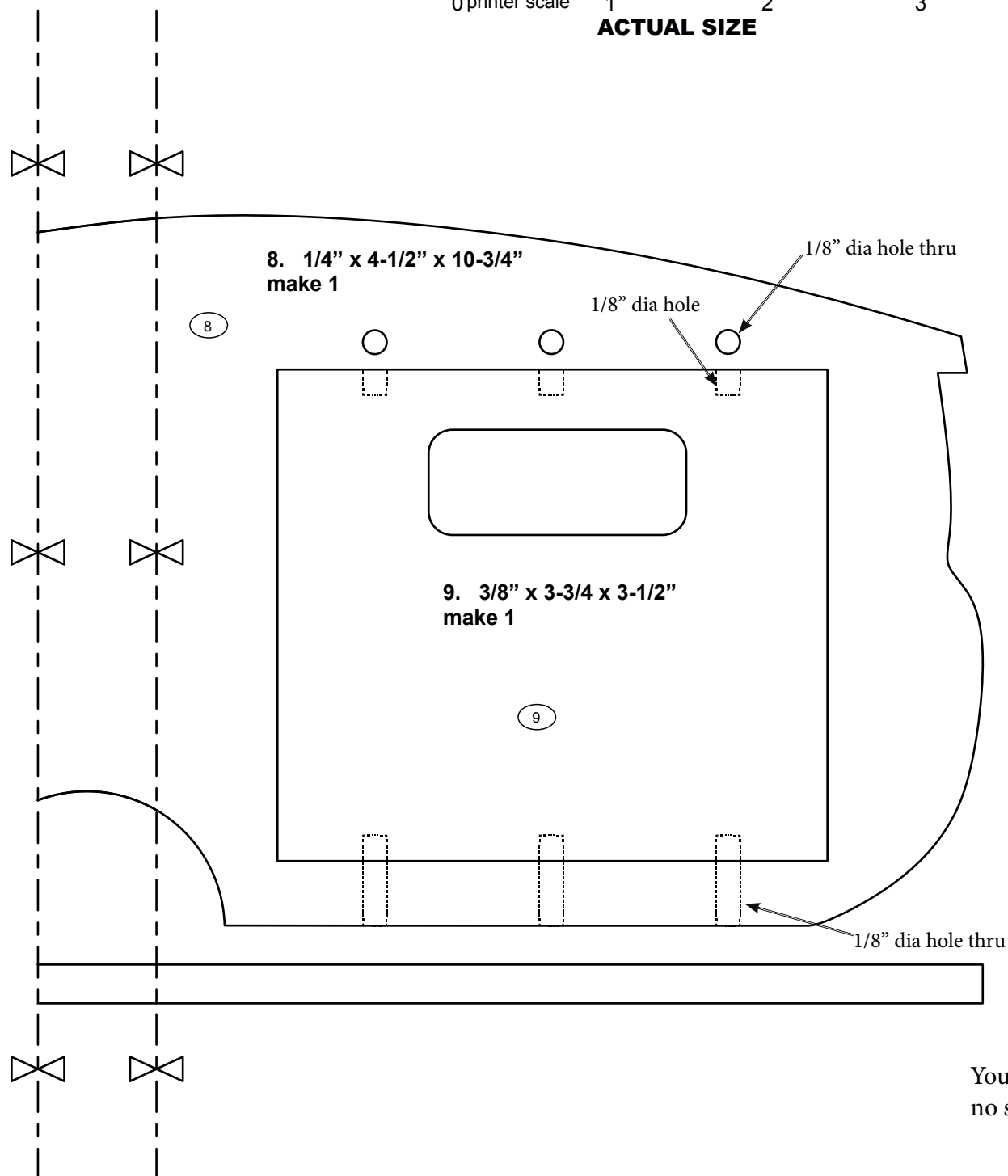
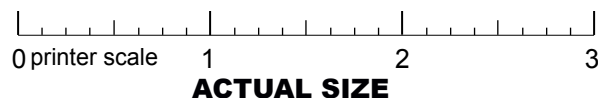


How to line up printed paper for joining together hold up the two pieces of paper to a glass window line up the four lines and tape the two pieces of paper together.

Simply print out the drawing patterns and apply the patterns to a piece of timber and cut out with a scroll saw.



You can print this plans on your own printer. Use no scaling on print output.



How to line up printed paper for joining together hold up the two pieces of paper to a glass window line up the four lines and tape the two pieces of paper together.

Simply print out the drawing patterns and apply the patterns to a piece of timber and cut out with a scroll saw.

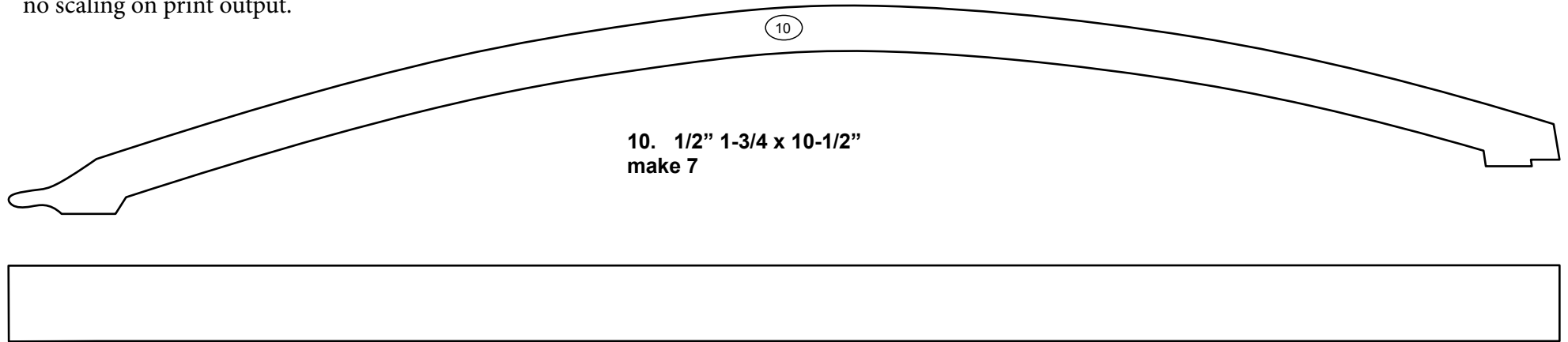
You can print this plans on your own printer. Use no scaling on print output.

Wood Toy Plan

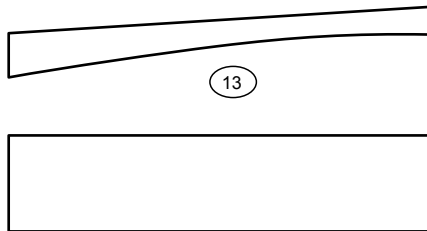
Classic Pickup Camper



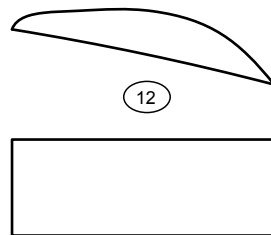
You can print this plans on your own printer. Use no scaling on print output.



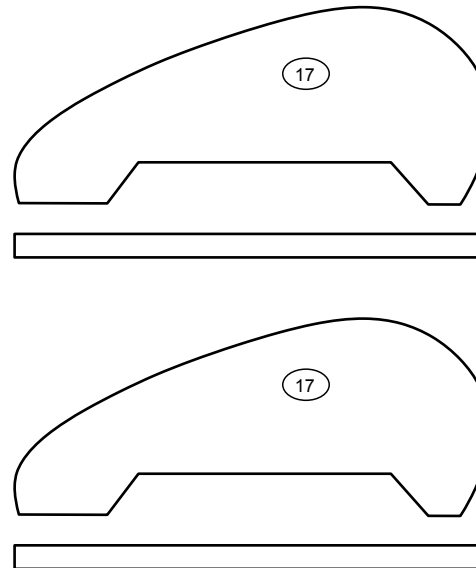
13. 1/4" x 1/2" x 2-1/4"
make 7



12. 1/2" x 1/2" x 1-3/4"
make 5

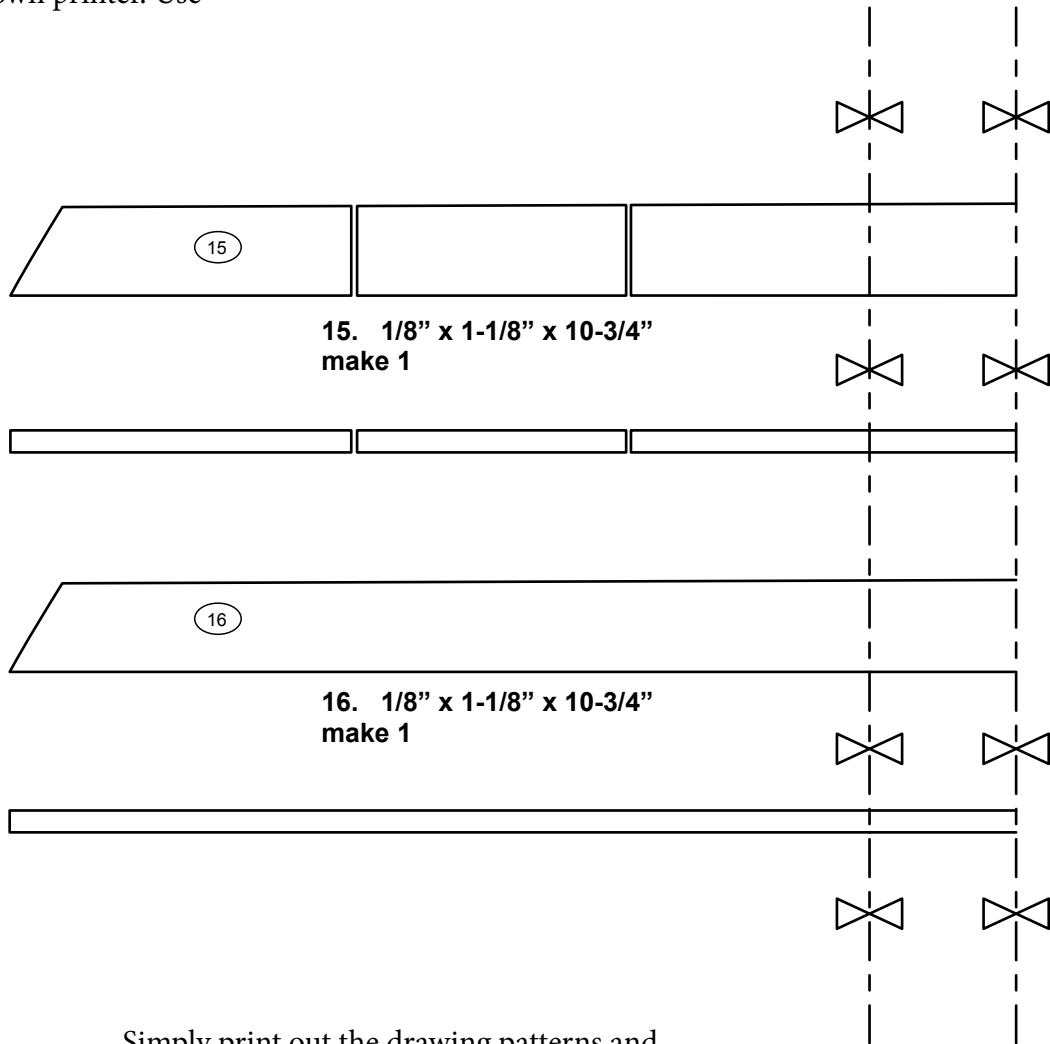
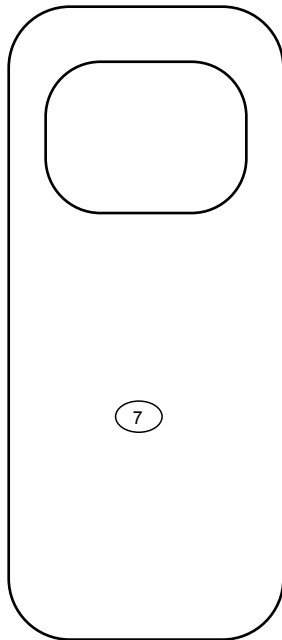


17. 1/8" x 1-1/4" x 2-1/8"
make 2



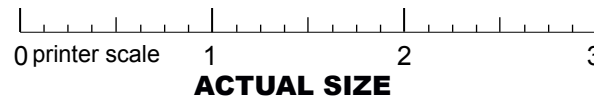
You can print this plans on your own printer. Use no scaling on print output.

7. 3/8" x 1-3/4" x 3-1/2"
make 1

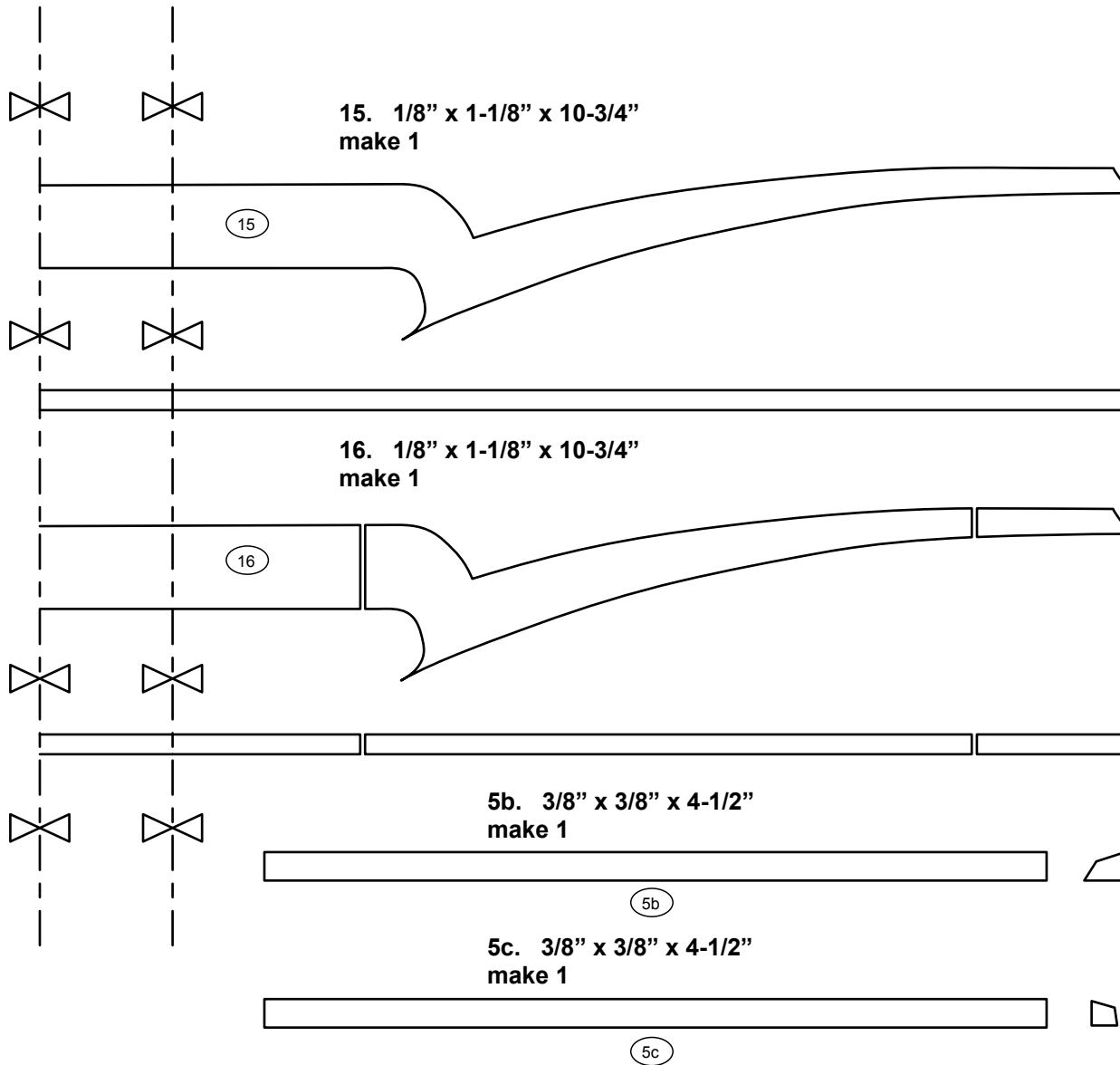


Simply print out the drawing patterns and apply the patterns to a piece of timber and cut out with a scroll saw.

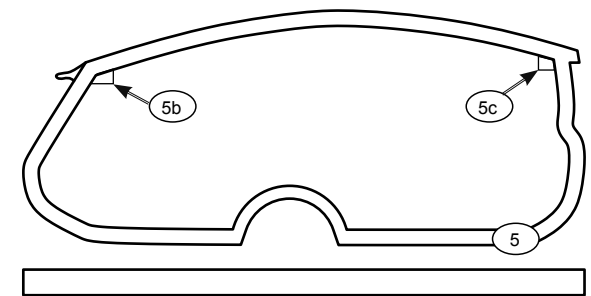
Wood Toy Plan Classic Pickup Camper



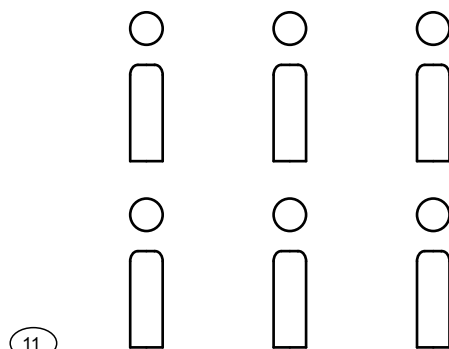
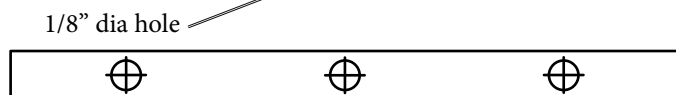
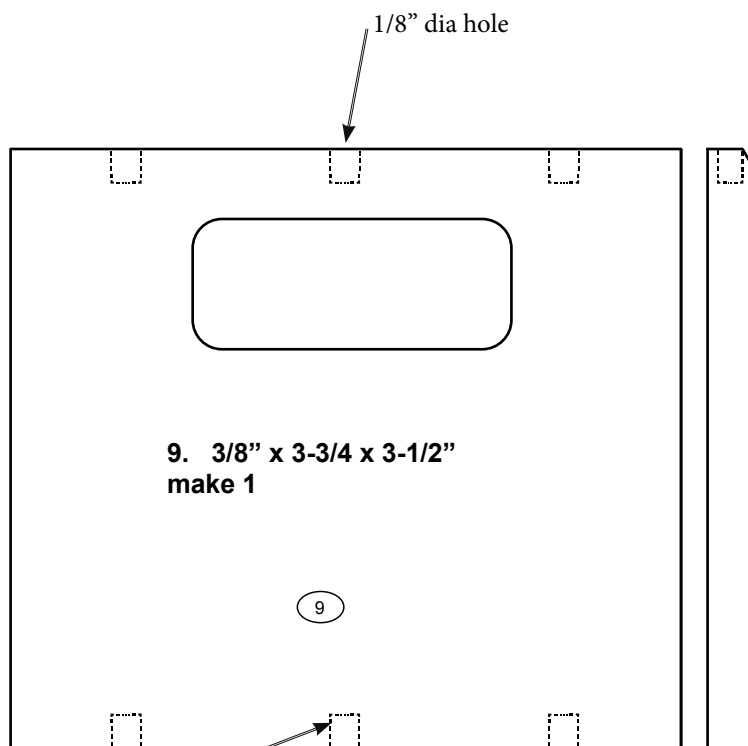
You can print this plans on your own printer. Use no scaling on print output.



Simply print out the drawing patterns and apply the patterns to a piece of timber and cut out with a scroll saw.



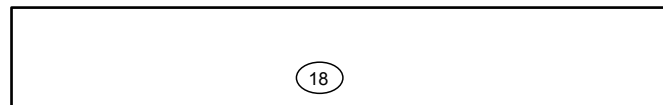
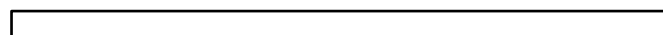
Note parts 5b 5c use a strong hardwood or use wooden dowel rods



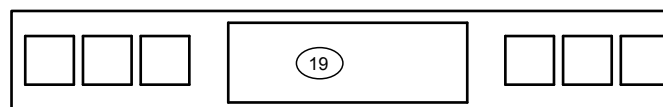
11. 1/8" diameter x 1/2"
make 6

Note
You can use 1/4" wood dowels instead of the
1/8" Make all holes to suit the wood dowels.

18. 1/4" x 3/4" x 3-3/4"
make 1

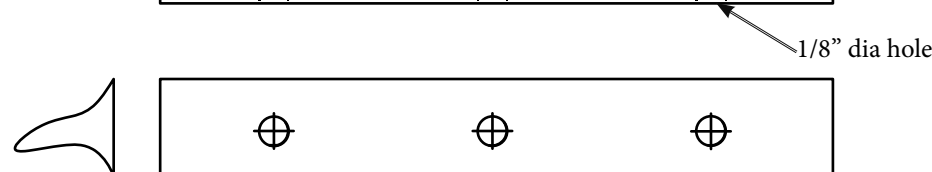
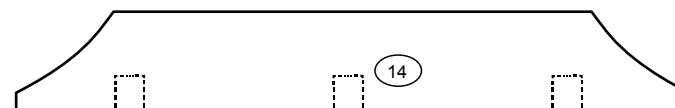


20. 1/8" x 1/4" x 1/4"
make 6



19. 1/8" x 5/8" x 1-1/4"
make 1

14. 1/2" x 3/4" x 3-3/4"
make 1



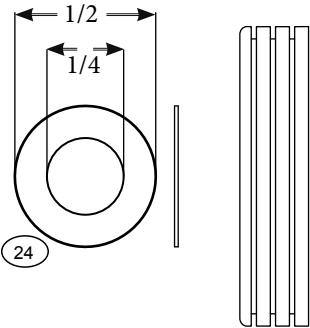
You can print this plans on your own printer. Use
no scaling on print output.

Wood Toy Plan
Classic Pickup Camper

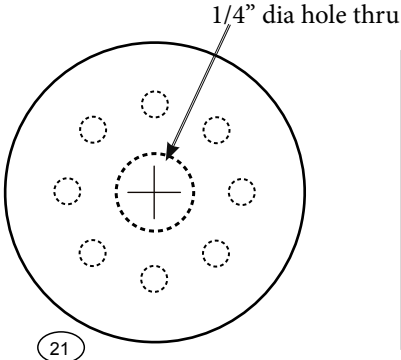


You can print this plans on your own printer. Use no scaling on print output.

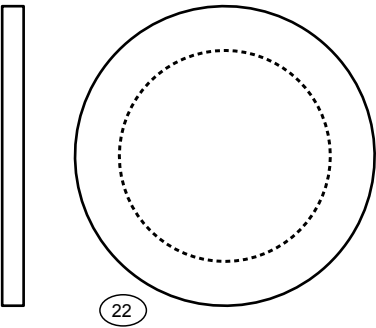
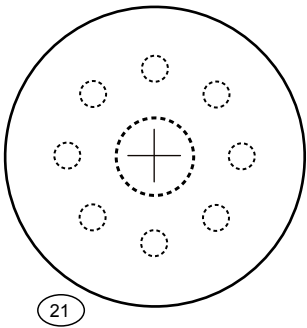
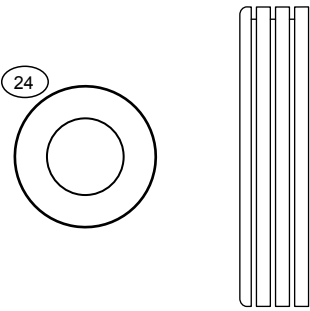
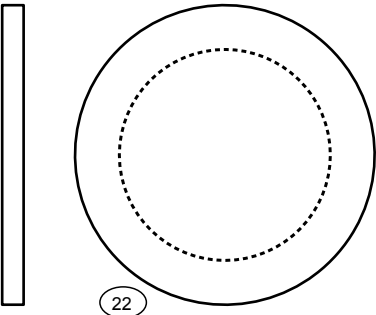
Part 24 Plastic Washers



21. 1-1/2" diameter x 3/8" make 2



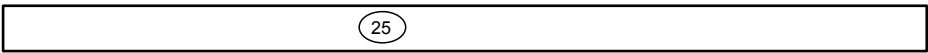
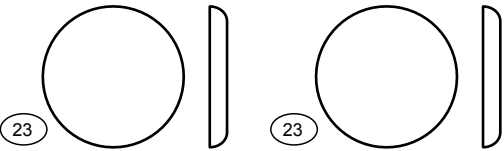
22. 1-1/2" diameter x 1/8" make 2



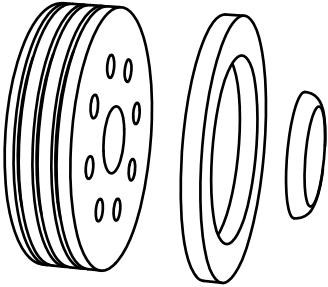
Part 21 Wheels
www.craftparts.com
Part #TWT150 Buy 2
1-1/2" Dia. x 1/2" thick
Hole size 1/4"

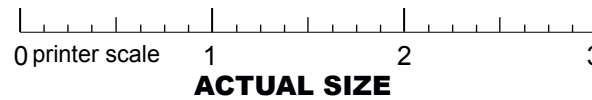
24. 1/2" diameter x 1/16" make 2

23. 3/4" diameter x 1/8" make 2



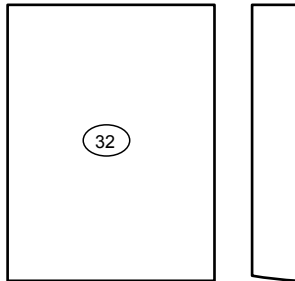
25. 1/4" diameter x 5" make 1



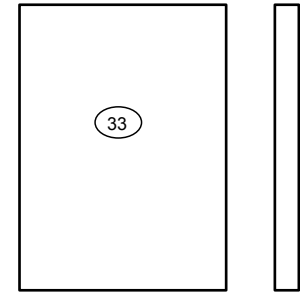


Wood Toy Plan Classic Pickup Camper

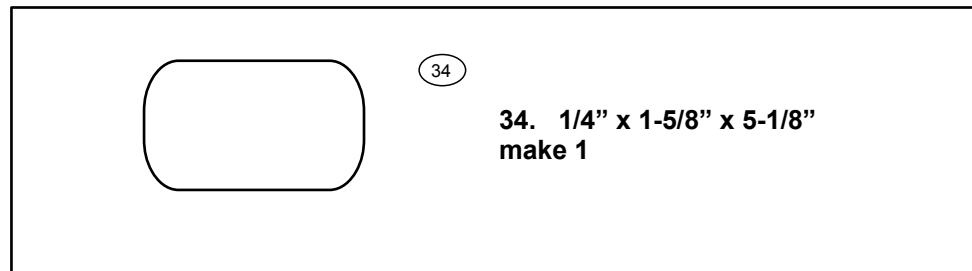
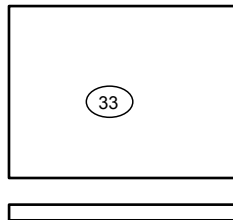
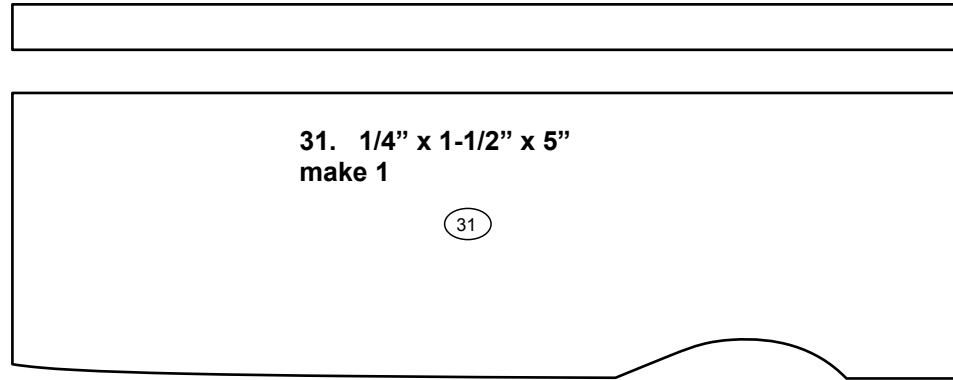
32. $\frac{1}{4}$ " x $1\frac{1}{4}$ " x $1\frac{1}{2}$ "
make 1



33. $\frac{1}{8}$ " x $1\frac{1}{4}$ " x $1\frac{1}{2}$ "
make 2

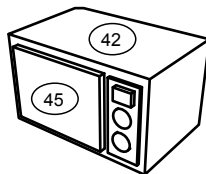
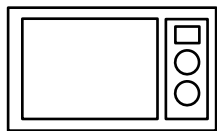


31. $\frac{1}{4}$ " x $1\frac{1}{2}$ " x 5"
make 1

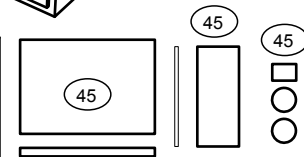
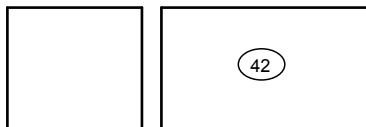


34. $\frac{1}{4}$ " x $1\frac{5}{8}$ " x $5\frac{1}{8}$ "
make 1

You can print this plans on
your own printer. Use no
scaling on print output.



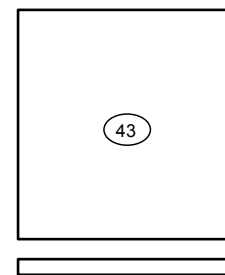
Note
Use $\frac{1}{16}$ wood veneer for parts
45 & cut out with sharp Knife



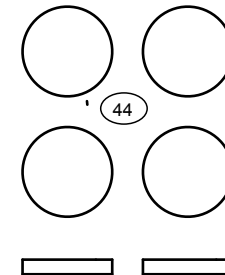
42. $\frac{3}{4}$ " x $\frac{3}{4}$ " x 1"
make 1

45. $1\frac{1}{2}$ " x $1\frac{1}{2}$ " x $\frac{1}{16}$ "
make 1

43. $\frac{1}{8}$ " x $1\frac{5}{8}$ " x $1\frac{5}{8}$ "
make 1



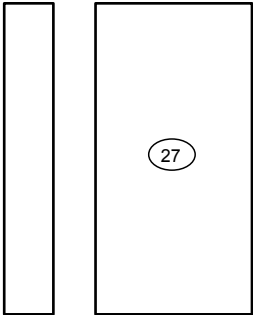
44. $\frac{1}{2}$ " diameter x $\frac{1}{8}$ "
make 4



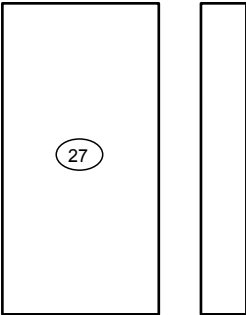
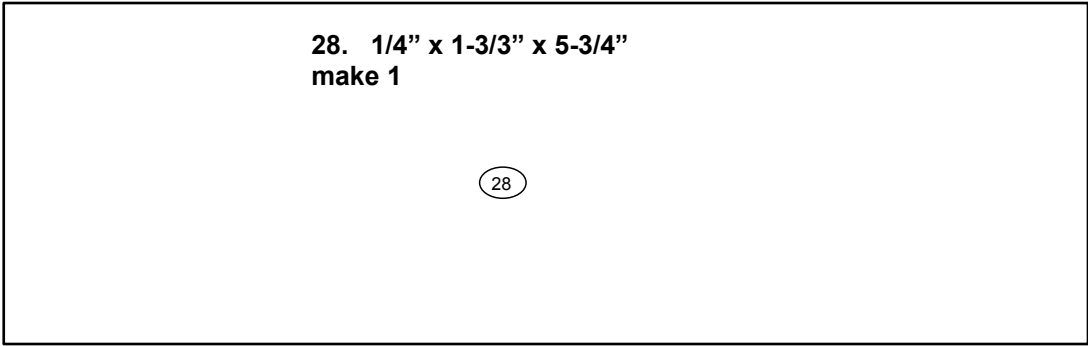
Wood Toy Plan
Classic Pickup Camper



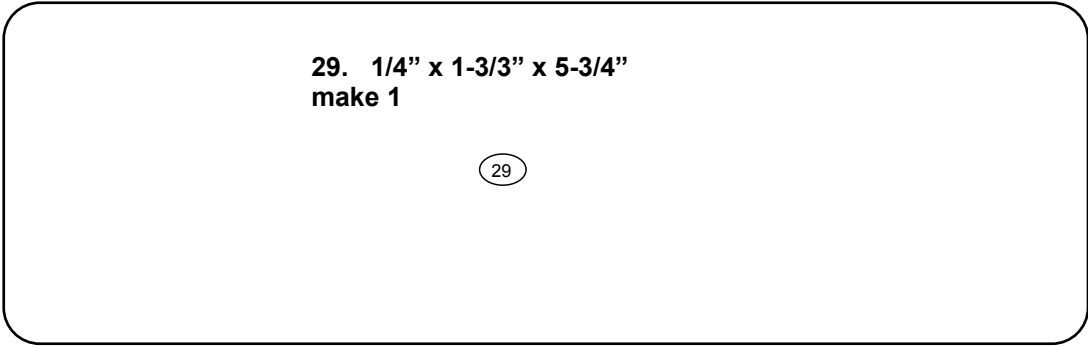
27. 1/4" x 1" x 1-3/4"
make 2



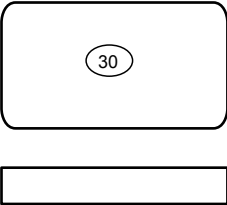
28. 1/4" x 1-3/3" x 5-3/4"
make 1



29. 1/4" x 1-3/3" x 5-3/4"
make 1

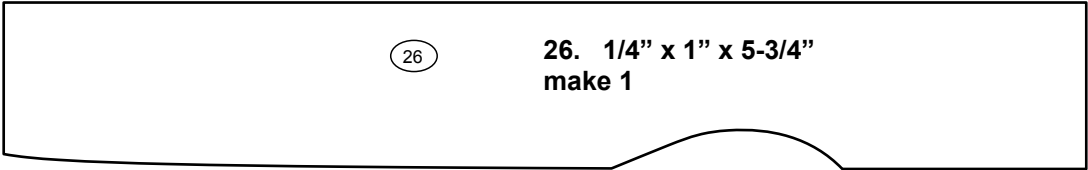


30. 1/4" x 5/8" x 1-1/4"
make 1

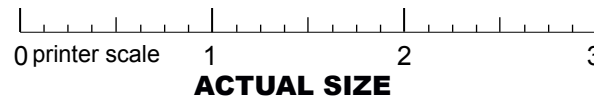


26

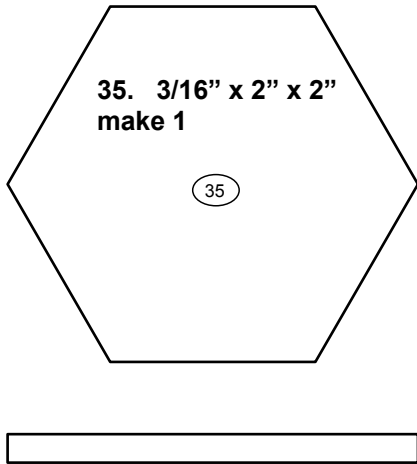
26. 1/4" x 1" x 5-3/4"
make 1



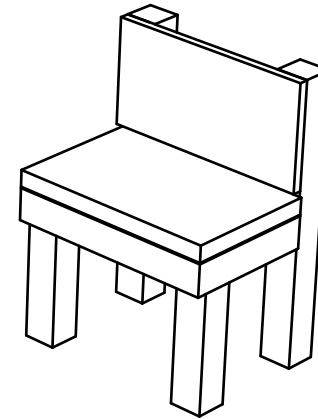
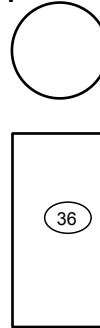
Wood Toy Plan Classic Pickup Camper



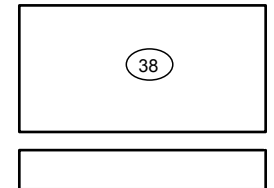
35. 3/16" x 2" x 2"
make 1



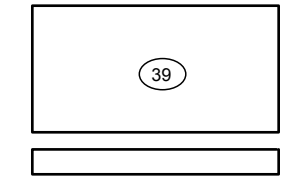
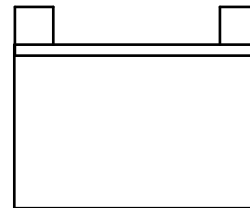
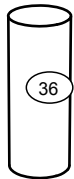
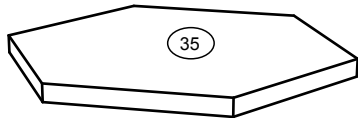
36. 1/2" diameter x 1"
make 1



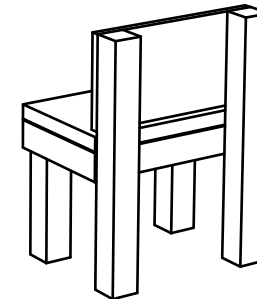
38. 3/16" x 5/8" x 1-1/8"
make 3



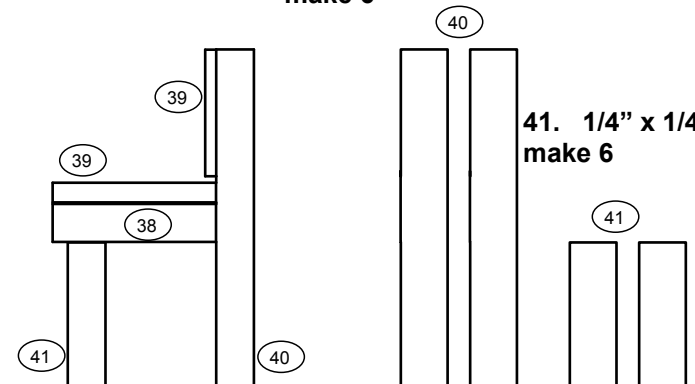
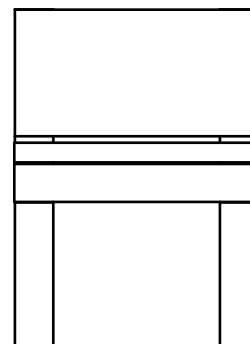
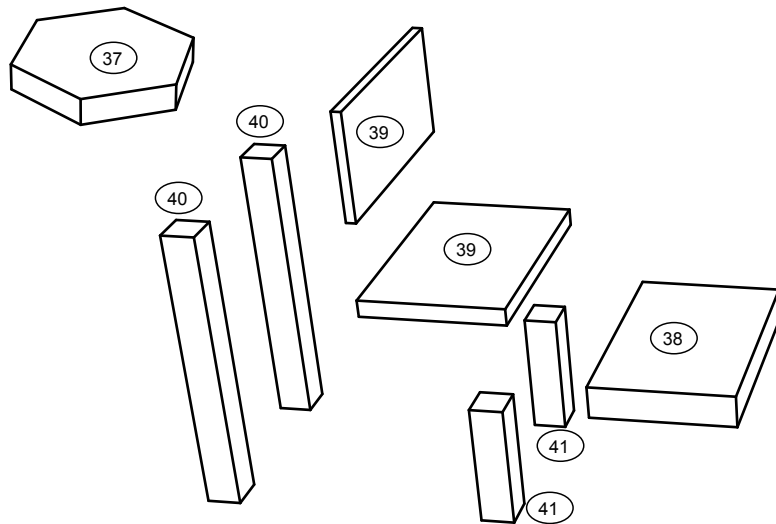
37. 1/4" x 1-1/4" x 1-1/4"
make 1



39. 1/8" x 5/8" x 1-1/8"
make 6



40. 1/4" x 1/4" x 1-3/4"
make 6

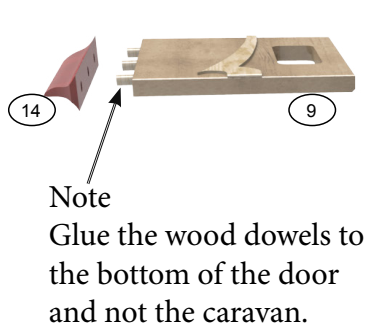


41. 1/4" x 1/4" x 3/4"
make 6

Note
Glue the wood dowels
to the caravan.



Make the holes slightly smaller than the wood dowels
And slightly taper the wood dowels at the ends.



Note
Glue the wood dowels to
the bottom of the door
and not the caravan.







Lloydswoodtoyplans



Wood Model plan sets

Wood Model plan sets realistic wood models
Digital PDF files can be downloaded instantly



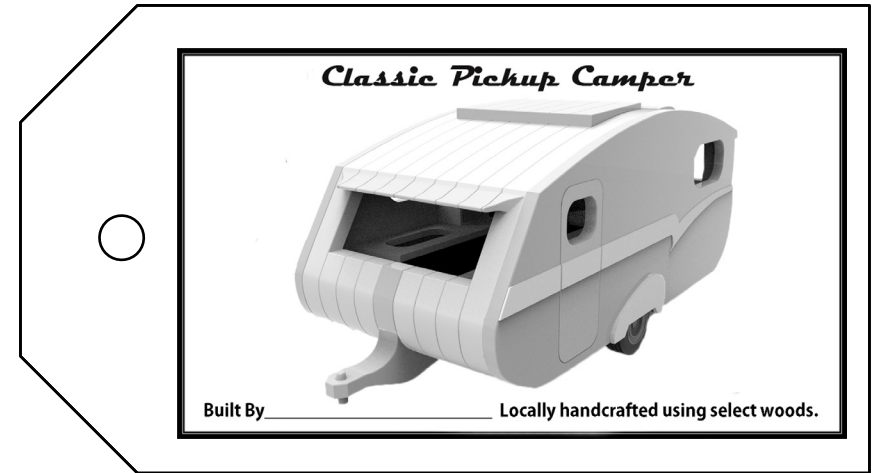
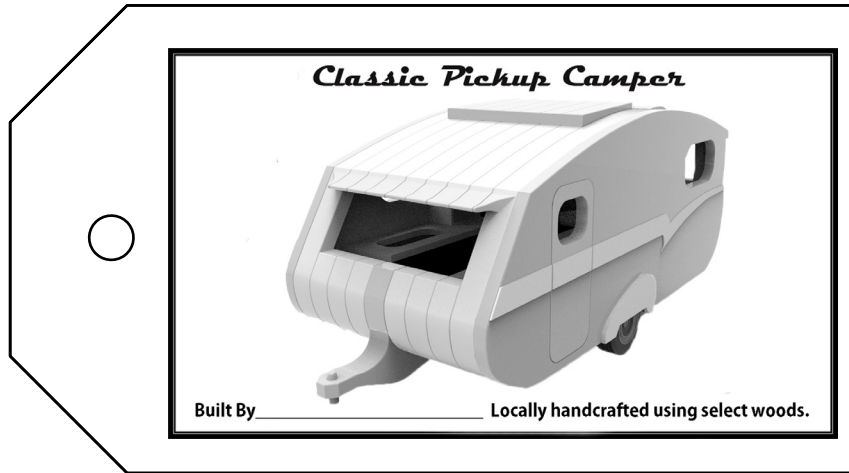
Over 200 Plan Sets to Choose From

Plan set are available at Lloydswoodtoyplans.com

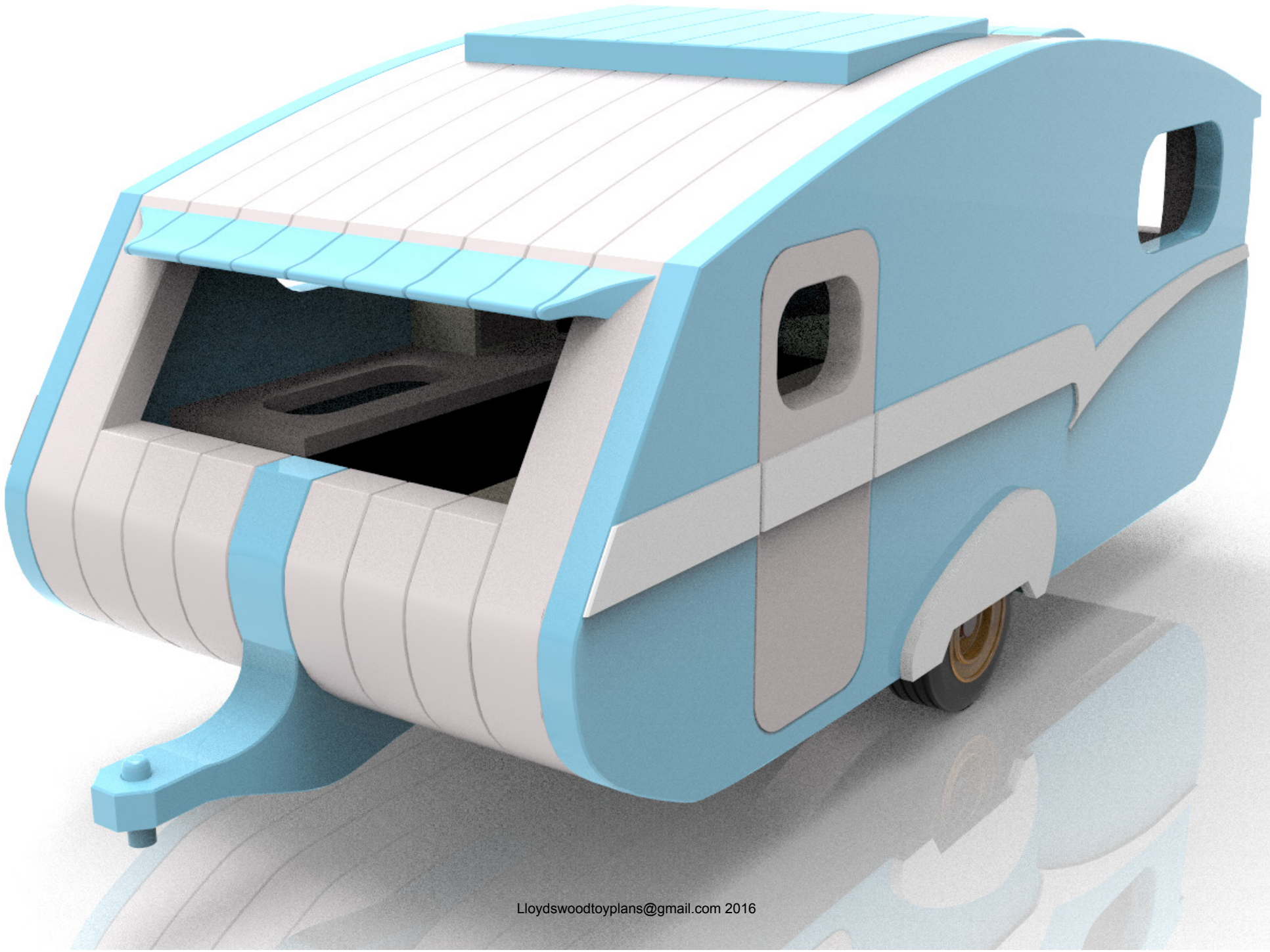
Many more plan sets are available also for sale on Etsy

<https://www.etsy.com/shop/Lloydswoodtoyplan>



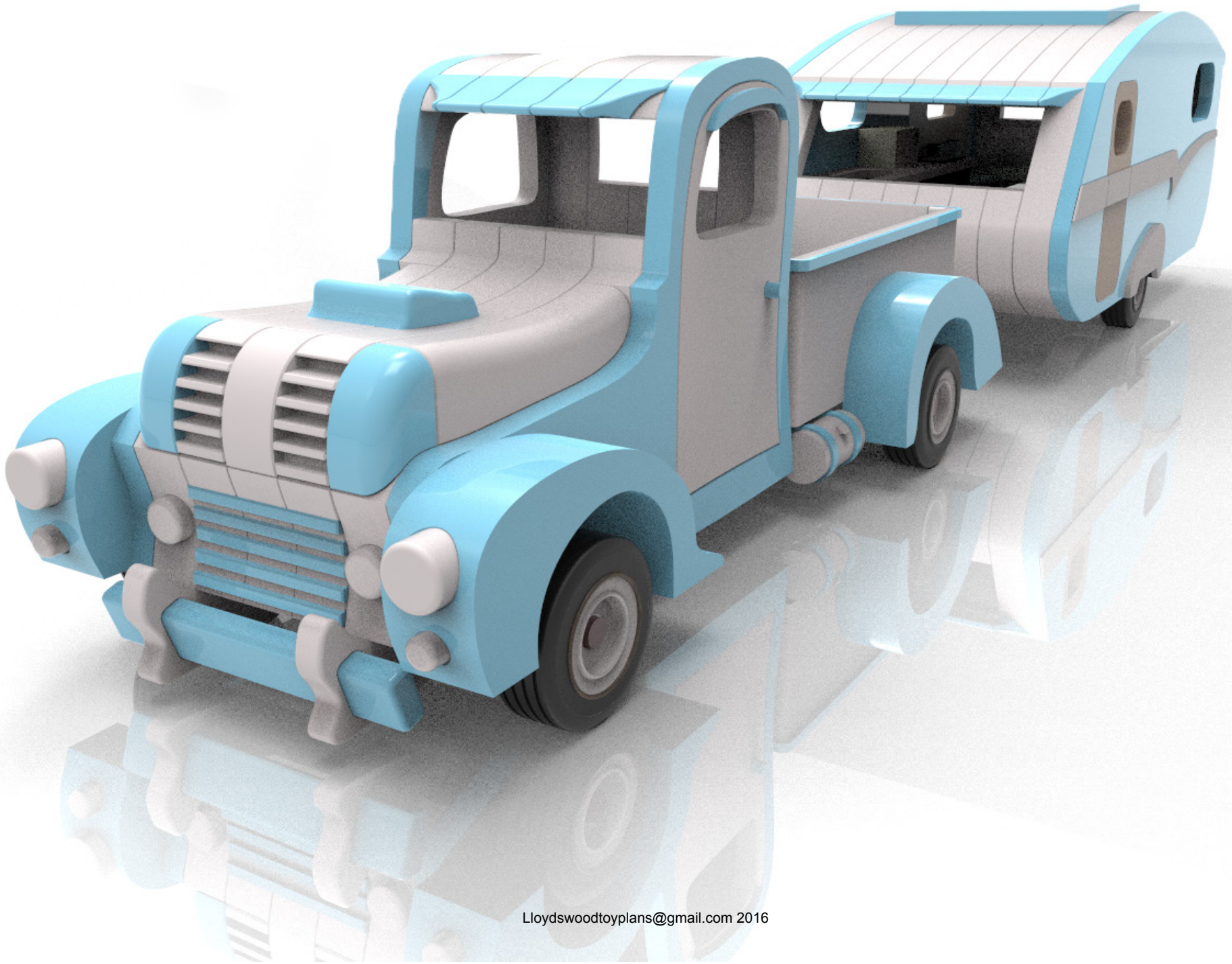


3D Renders



3D Renders

Wood Toy Plan
Classic Pickup Camper

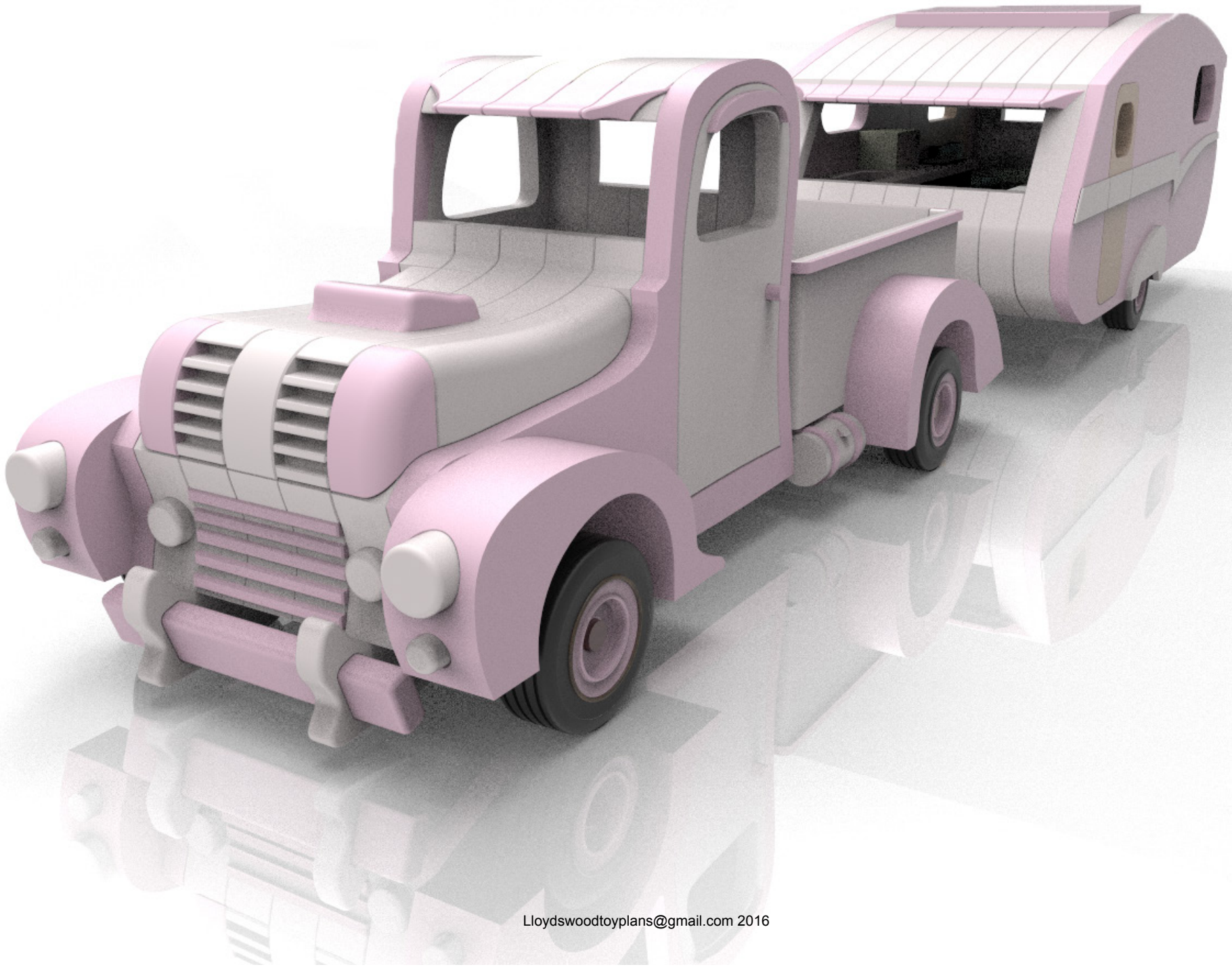


3D Renders



3D Renders

Wood Toy Plan
Classic Pickup Camper



CONVERSION CHARTS

25.4 Millimeters = 1 inch; 2.54 Centimeters = 1 inch

INCHES INTO MILLIMETERS	
Inches	Millimeters
1	25.40
2	50.80
3	76.20
4	101.60
5	127.00
6	152.40
7	177.80
8	203.20
9	228.60
10	254.00
11	279.40
12	304.80
13	330.20
14	355.60
15	381.00
16	406.40
17	431.80
18	457.20
19	482.60
20	508.00
21	533.40
22	558.80
23	584.20
24	609.60
25	635.00
26	660.40
27	685.80
28	711.20
29	736.60
30	762.00
31	787.40
32	812.80
33	838.20
34	863.60
35	889.00
36	914.40
37	939.80
38	965.20
39	990.60
40	1,016.00
41	1,041.40
42	1,066.80
43	1,092.20
44	1,117.60
45	1,143.00
46	1,168.40
47	1,193.80
48	1,219.20
49	1,244.60
50	1,270.00
100	2,540.00
200	5,080.00
300	7,620.00
400	10,160.00
500	12,700.00
1000	25,400.00

MILLIMETERS INTO INCHES			
MM	Inches	MM	Inches
1	.0394	51	2.0079
2	.0787	52	2.0472
3	.1181	53	2.0866
4	.1575	54	2.1260
5	.1969	55	2.1654
6	.2362	56	2.2047
7	.2756	57	2.2441
8	.3150	58	2.2835
9	.3543	59	2.3228
10	.3937	60	2.3622
11	.4331	61	2.4016
12	.4724	62	2.4410
13	.5118	63	2.4803
14	.5512	64	2.5197
15	.5906	65	2.5591
16	.6299	66	2.5984
17	.6693	67	2.6378
18	.7087	68	2.6772
19	.7480	69	2.7165
20	.7872	70	2.7559
21	.8268	71	2.7953
22	.8661	72	2.8347
23	.9055	73	2.8740
24	.9449	74	2.9134
25	.9843	75	2.9528
26	1.0236	76	2.9921
27	1.0630	77	3.0315
28	1.1024	78	3.0709
29	1.1417	79	3.1102
30	1.1811	80	3.1496
31	1.2205	81	3.1890
32	1.2598	82	3.2284
33	1.2992	83	3.2677
34	1.3386	84	3.3071
35	1.3780	85	3.3465
36	1.4173	86	3.3858
37	1.4567	87	3.4252
38	1.4961	88	3.4646
39	1.5354	89	3.5039
40	1.5748	90	3.5433
41	1.6142	91	3.5827
42	1.6535	92	3.6221
43	1.6929	93	3.6614
44	1.7323	94	3.7008
45	1.7717	95	3.7402
46	1.8110	96	3.7795
47	1.8504	97	3.8189
48	1.8898	98	3.8583
49	1.9291	99	3.8976
50	1.9685	100	3.9370

FRACTIONS INTO MILLIMETERS		
Fraction	Inches	Millimeters
1/64	.01562	.3969
1/32	.03125	.7938
3/64	.046875	1.1906
1/16	.0625	1.5875
5/64	.078125	1.9844
3/32	.09375	2.3812
7/64	.109375	2.7781
1/8	.125	3.175
9/64	.140625	3.5719
5/32	.15625	3.9688
11/64	.171875	4.3656
3/16	.1875	4.7625
13/64	.203125	5.1594
7/32	.21875	5.5562
15/64	.234375	5.9531
1/4	.25	6.35
17/64	.265625	6.7469
9/32	.28125	7.1438
19/64	.296875	7.5406
5/16	.3125	7.9375
21/64	.328125	8.3344
11/32	.34375	8.7312
23/64	.359375	9.1281
3/8	.375	9.525
25/64	.390625	9.9129
13/32	.40625	10.3188
27/64	.421875	10.7156
7/16	.4375	11.1125
29/64	.453125	11.5094
15/32	.46875	11.9062
31/64	.484375	12.3031
1/2	.5	12.7
33/64	.515625	13.0969
17/32	.53125	13.4938
35/64	.546875	13.8906
9/16	.5625	14.2875
37/64	.578125	14.6844
19/32	.59375	15.0812
39/64	.609375	15.4781
5/8	.625	15.875
41/64	.640625	16.2719
21/32	.65625	16.6688
43/64	.671875	17.0656
11/16	.6875	17.4625
45/64	.703125	17.8594
23/32	.71875	18.2562
47/64	.734375	18.6531
3/4	.75	19.05
49/64	.765625	19.4469
25/32	.78125	19.8438
51/64	.796875	20.2406
13/16	.8125	20.6375
53/64	.828125	21.0344
27/32	.84375	21.4312
55/64	.859375	21.8281
7/8	.875	22.225
57/64	.890625	22.6219
29/32	.90625	23.0188
59/64	.921875	23.4156
15/16	.9375	23.8125
61/64	.953125	24.2094
31/32	.96875	24.6062
63/64	.984375	25.0031
1	1.0	25.40